



PRODUCT CATALOG

VOLUME 20

CONTENTS

MATERIALS 04

OUR COLLECTIONS 06

RUGS 16

 Jute 16

 Wool Blends 38

 Azure 46

 Cornucopia 54

 Rounds & Ovals 84

SAUNA MAT 110

BOOT TRAYS 112

POUFS 116

CARE & CLEANING 140



MATERIALS

Our planet is getting hotter if you believe the science (and we do). We are living in a material world if you believe Madonna (we believe this as well). What steps can we take as a society to lessen our negative impact on the environment while still buying the stuff we like? One thing we can do is to choose to buy goods made from sustainable and recycled materials. As a manufacturer we have made it our mission to source such materials whenever possible. In fact, all of our products are made using significant percentages of sustainable materials that are either natural, recycled or upcycled. You can learn more about some of the sustainable materials we use to make our quality products on the following page.



JUTE

Nicknamed the “Golden Fiber” for its beautiful luster, Jute fibers are characteristically long, soft and shiny and are among the strongest, most flexible vegetable fibers on the planet. Its fibers exhibit naturally anti-static, insulating and moisture regulating properties that are exceptional qualities for a natural fiber area rug.

WOOL

Wool is, of course, an animal fiber shorn from sheep. It resists crushing due to a natural, permanent crimp so it wears well and handles the rigors of a busy home. It is naturally anti-static, flame resistant and moisture resistant and cleans easily. It is soft and feels warm in the winter and cool in the summer.

COTTON

Cotton is the most widely used natural fiber in the textile industry. It's super soft and breathable. While the cotton industry relies heavily on chemicals for production there are a small but growing number of farmers who are moving to organic methods. The cotton we use in our products is upcycled, virgin scrap from the textile industry.

DENIM

Denim is nearly 100% cotton—modern fashion sensibilities now favor a touch of stretchy fibers like polyester and elastane that allow jeans some give. The denim we use in our rugs is virgin scrap upcycled from the textile industry.

PET

PET yarn is made from recycled plastic soda bottles and other plastic waste that are highly recyclable items. The supply of this post-consumer waste is abundant. Diverting disposable soda and water bottles from landfills to recycling centers is something easy to get behind and you can do so when you purchase one of our rugs made of post-consumer PET.

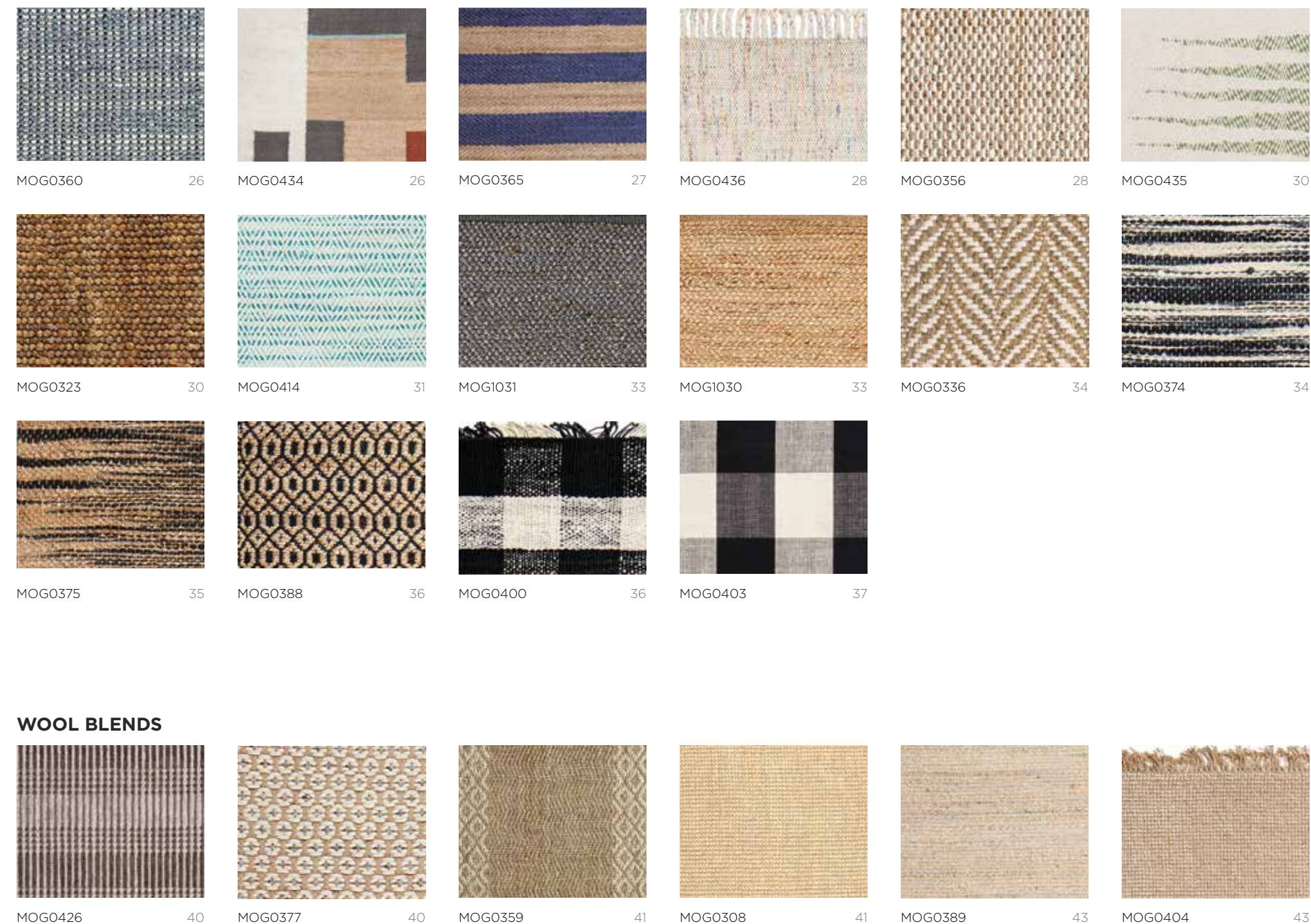
OUR COLLECTIONS

Get an overview of our entire collection with this thumbnail gallery—note page numbers listed at the bottom right of each style.

JUTE



JUTE (continued)



WOOL BLENDS

WOOL BLENDS *(continued)*



MOG0427 44



MOG0430 44



MOG0432 45

AZURE



MOG1032 48



MOG0371 48



MOG1116 49



MOG1115 50



MOG1033 50



MOG1117 51



MOG1124 51



MOG1119 52



MOG1120 52

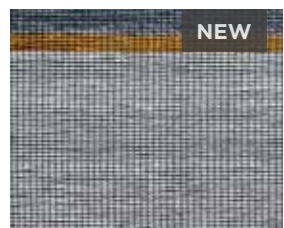


MOG1121 53

CORNUCOPIA



MOG0473 56



MOG0476 56



MOG0481 57



MOG0482 57



MOG0483 58



MOG0440 58

CORNUCOPIA *(continued)*



MOG0439 61



MOG0438 61



MOG0411 62



MOG0416 63



MOG0418 63



MOG0756 64



MOG0757 64



MOG0850 65



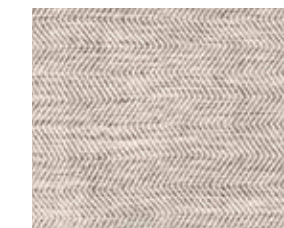
MOG0851 66



MOG0852 66



MOG0384 67



MOG0385 67



MOG0387 68



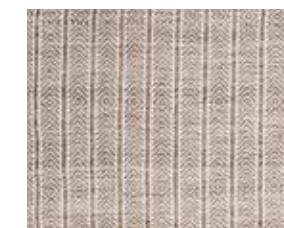
MOG0386 68



MOG0382 69



MOG0381 69



MOG0383 70



MOG0351 70



MOG0390 71



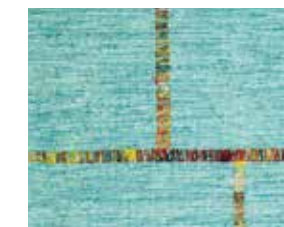
MOG0391 71



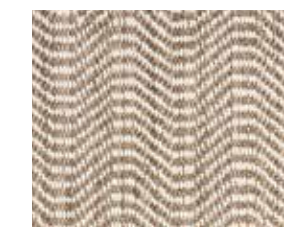
MOG0399 72



MOG0401 73



MOG0420 73

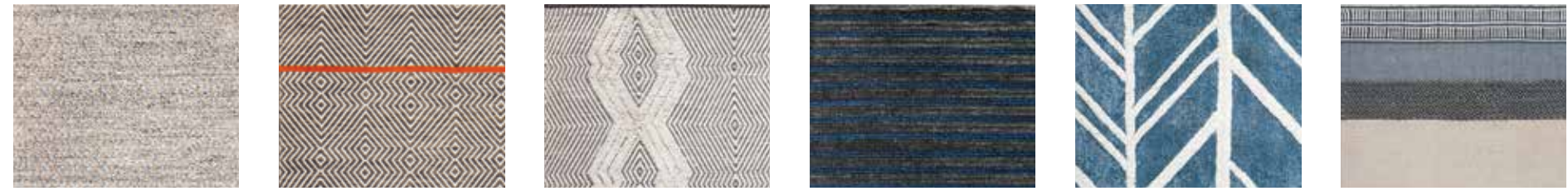


MOG0405 74

CORNUCOPIA *(continued)*



MOG0407 74 MOG0408 75 MOG0410 75 MOG0853 76 MOG0855 76 MOG0422 77

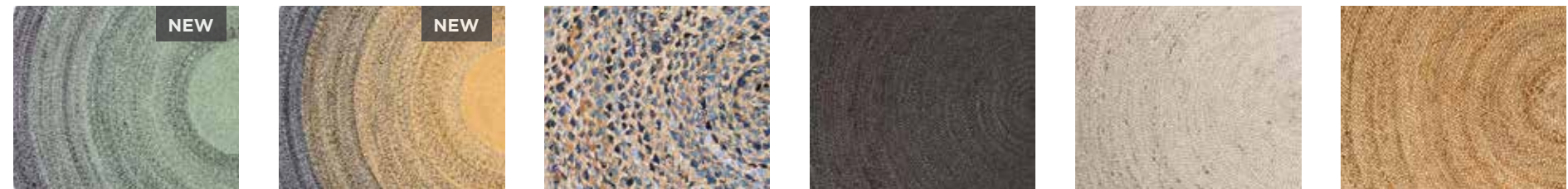


MOG0423 77 MOG0428 78 MOG0429 78 MOG0431 79 MOG0614 79 MOG0446 80



MOG1102 80 MOG0451 81 MOG1103 82 MOG0856 82 MOG0857 83 MOG1013 83

ROUNDS & OVALS



MOG0479 86 MOG0480 86 MOG0350 88 MOG0329 88 MOG0340 89 MOG0328 89

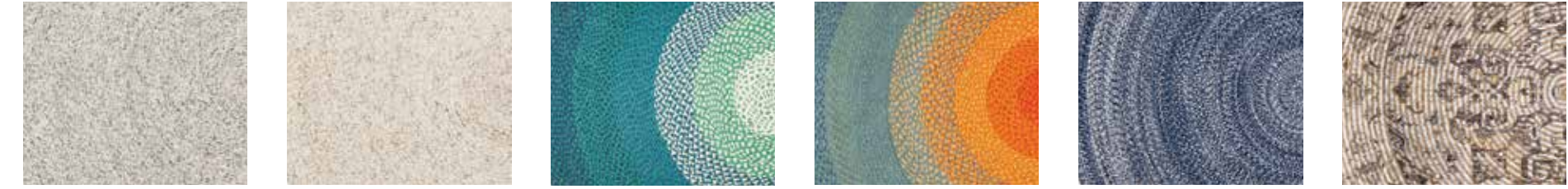
ROUNDS & OVALS *(continued)*



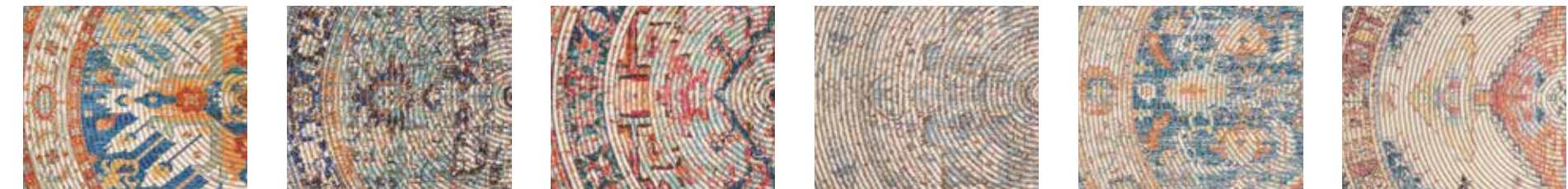
MOG0363 90 MOG0364 90 MOG0362 91 MOG0392 91 MOG0393 92 MOG0394 92



MOG0395 93 MOG0396 93 MOG0397 94 MOG0398 94 MOG0614 95 MOG0651 95



MOG0622 97 MOG0623 97 MOG0437 98 MOG0424 98 MOG0425 99 MOG0850 100



MOG0851 100 MOG0852 101 MOG0853 102 MOG0855 102 MOG0856 104 MOG0857 104

ROUNDS & OVALS *(continued)*



MOG0460 105 MOG0461 105 MOG0462 106 MOG0463 106 MOG0464 107 MOG0465 107



MOG0466 108 MOG0467 108 MOG0468 109 MOG0469 109

SAUNA MAT



MOG0190 111 MOG0191 111 MOG0192 111 MOG0194 111

BOOT TRAYS



001 115 002 115 003 115 004 115 005 115 006 115

BOOT TRAYS *(continued)*



007 115 008 115 009 115 010 115

POUFS



MOGPF001-2014 118 MOGPF002-2014 118 MOGPF003-2014 119 MOGPF004-2014 119 MOGPF005-2014 121 MOGPF006-2014 121



MOGPF007-2014 122 MOGPF008-1818 122 MOGPF009-1818 123 MOGPF010-1818 123 MOGPF011-1818 124 MOGPF012-1818 124



MOGPF013-1818 126 MOGPF014-2014 126 MOGPF015-2014 127 MOGPF016-2014 127 MOGPF017-2014 129 MOGPF018-2014 129

POUFS *(continued)*



NEW

MOGPF019-1818 130



NEW

MOGPF020-1818 130



NEW

MOGPF021-2014 131



NEW

MOGPF022-2014 131



NEW

MOGPF023-2514 132



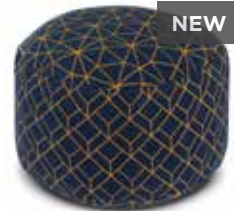
NEW

MOGPF024-2514 132



NEW

MOGPF025-2514 134



NEW

MOGPF026-2514 134



NEW

MOGPF027-2514 135



NEW

MOGPF028-2514 135



NEW

MOGPF029-2514 137



NEW

MOGPF030-2514 137



MOG0010-16RD 138



MOG0002-1818 138



MOG0009-16RD 139



MOG0001-1818 139



JUTE

COLLECTION

Jute is an incredibly versatile and sustainable natural fiber that has been used around the globe for centuries to produce a seemingly endless array of products. Jute brings a magnificent, chunky texture to any space. Its fibers exhibit naturally anti-static, insulating and moisture regulating properties. Its long, soft and durable fibers are ideal for area rugs.

WEAVING TECHNIQUES

- Handloom Woven
- Braided

MATERIALS

- Jute
- Cotton
- Hemp

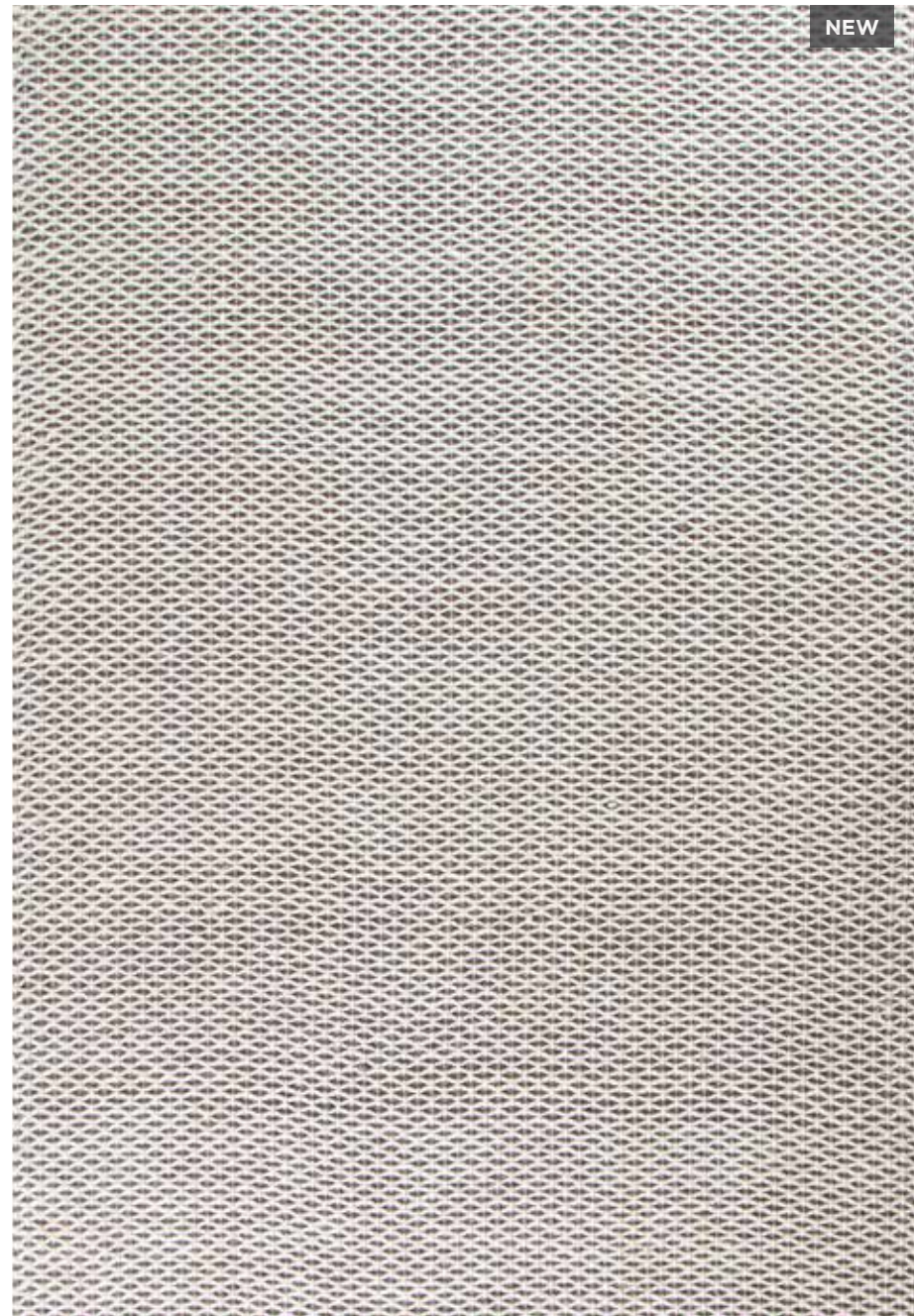
Rug pad recommended





MOG0447

5'x7' 8'x10' 70% jute 30% polyester handloom woven



MOG0470

4'x6' 5'x8' 8'x10' 100% jute handloom woven



MOG0470



NEW

MOG0471

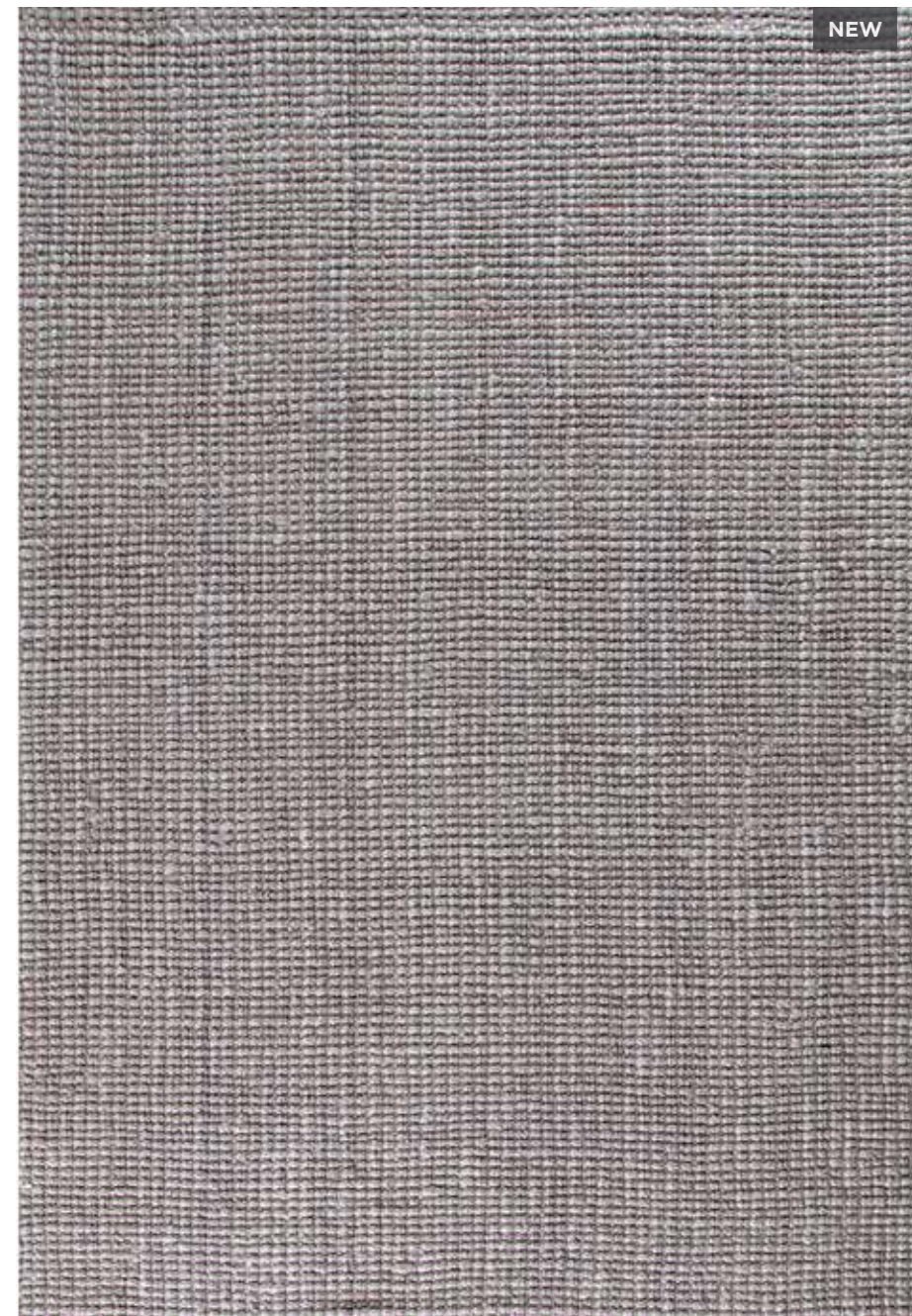
5'x8' 8'x10' 100% jute handloom woven



NEW

MOG0472

5'x8' 8'x10' 100% jute handloom woven



NEW

MOG0474

4'x6' 5'x8' 8'x10' 100% jute handloom woven



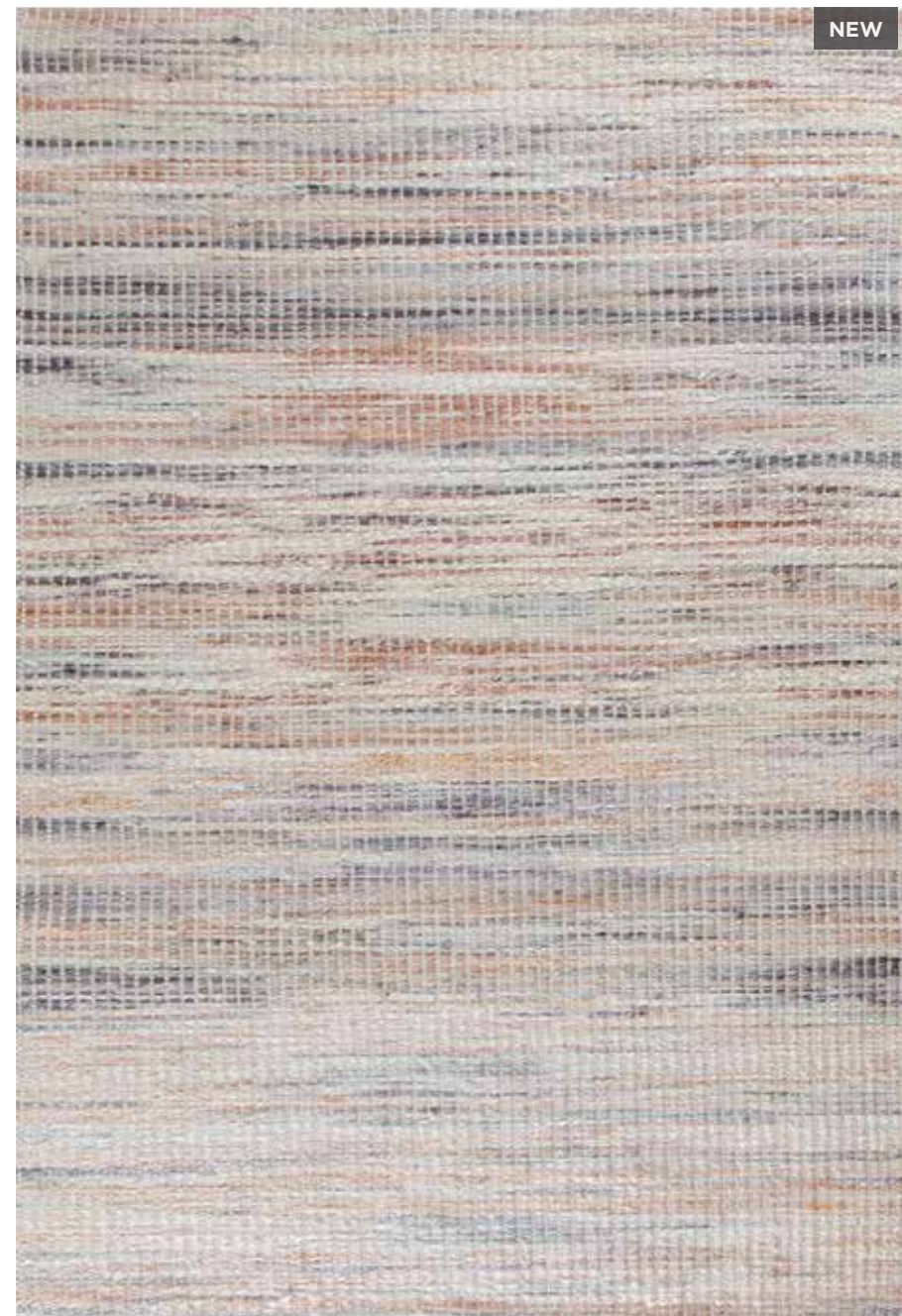
NEW

MOG0475

4'x6' 5'x8' 8'x10' 100% jute handloom woven



MOG0478



MOG0477

5'x8' 8'x10' 100% jute handloom woven



MOG0478

4'x6' 5'x8' 8'x10' 100% jute handloom woven



MOG0338

4'x6' 2.5'x8' 5'x8' 8'x10' 9'x12' 10'x14' 100% jute handloom woven



MOG0300

2'x3' 2.5'x6' 2.5'x8' 2.5'x12' 3'x5' 4'x6' 5'x8' 8'x10' 9'x12' 10'x14' 100% jute handloom woven



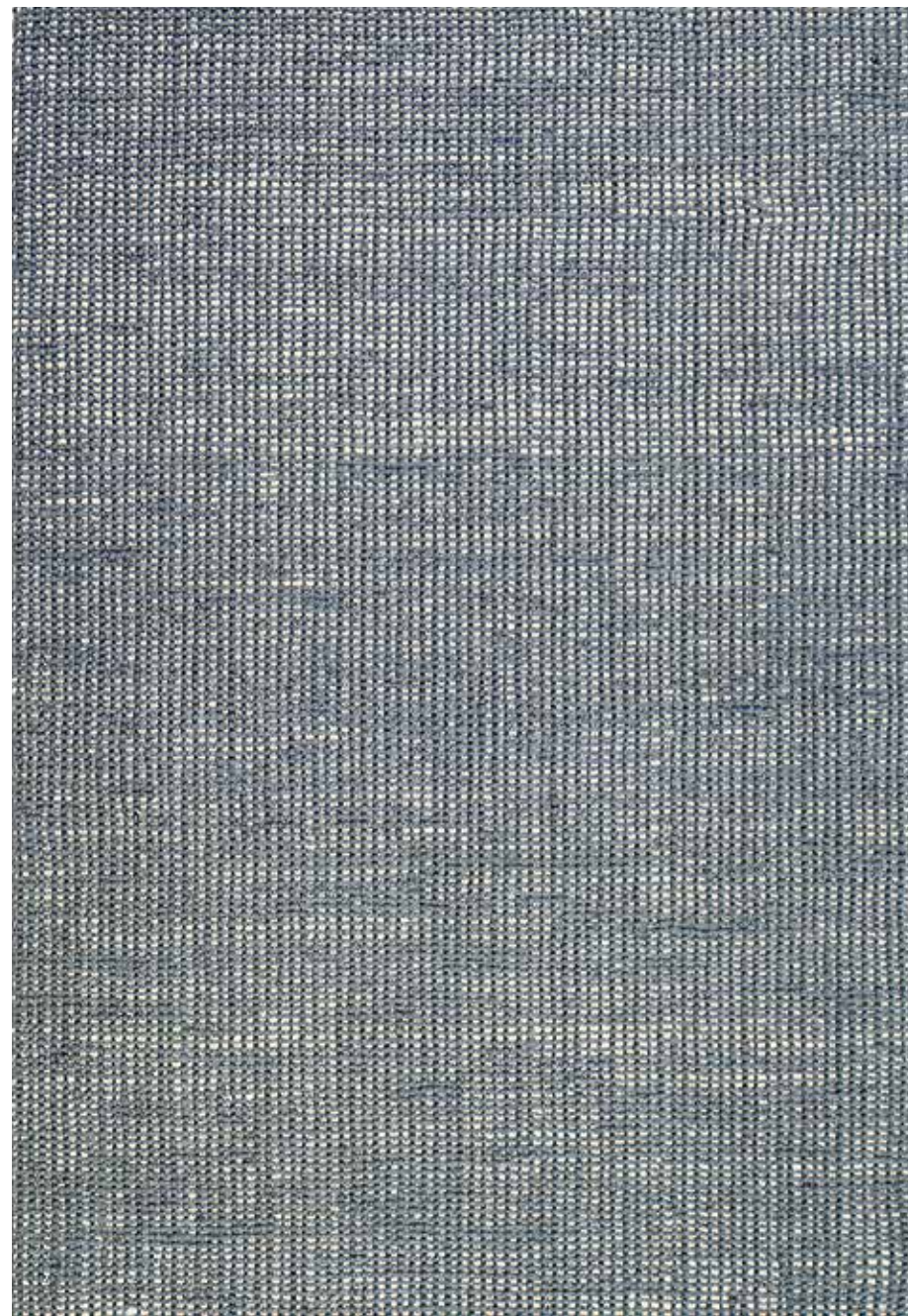
MOG0372

4'x6' 5'x7' 8'x10' 9'x12' 100% jute handloom woven



MOG0355

5'x8' 8'x10' 9'x12' 100% jute handloom woven



MOG0360

5'x8' 8'x10' 9'x12' 100% jute handloom woven



MOG0434

5'x8' 8'x10' 100% jute handloom woven

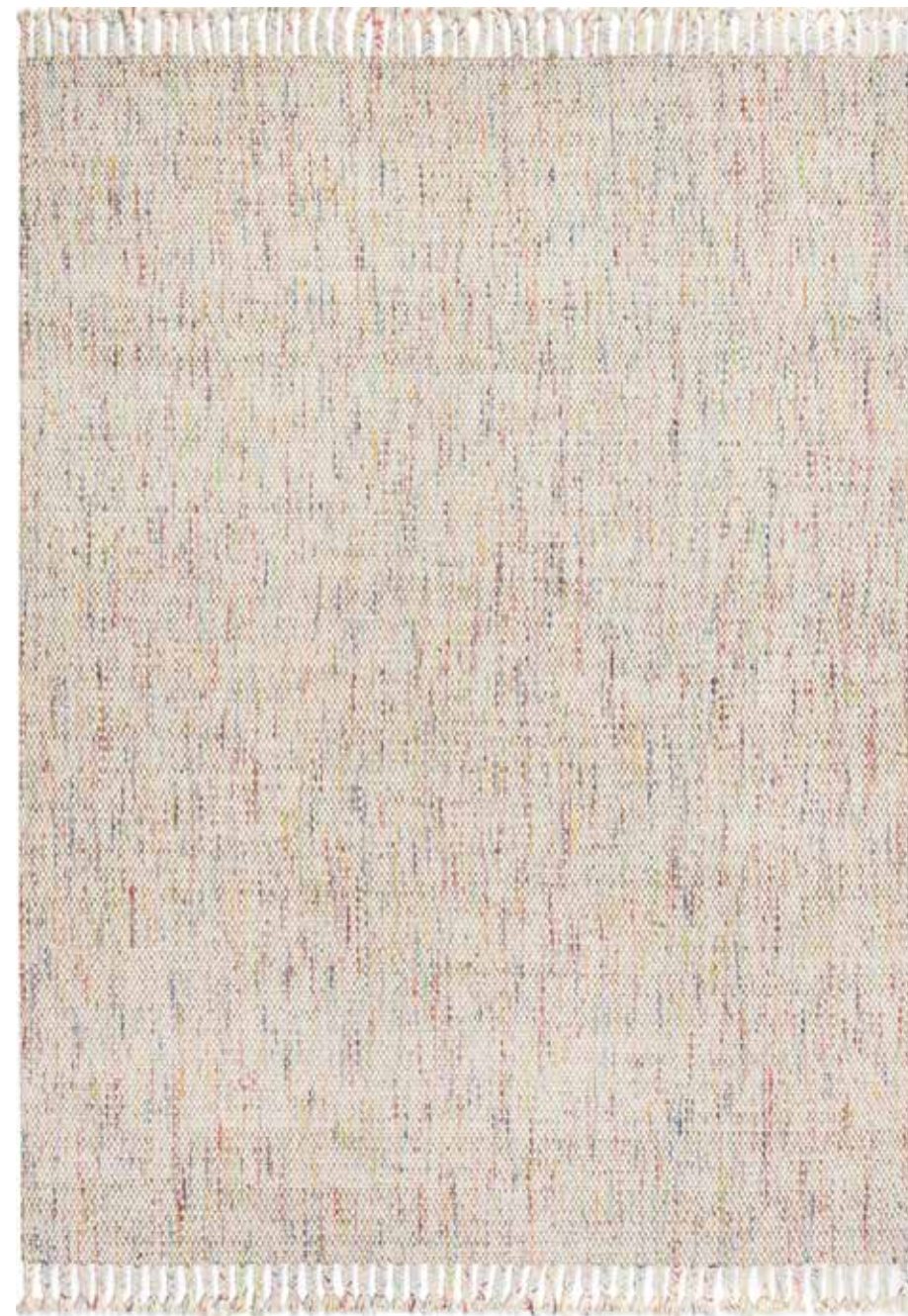


MOG0365

4'x6' 5'x7' 8'x10' 100% jute handloom woven



MOG0434



MOG0436

5'x8' 8'x10' 100% jute handloom woven



MOG0356

5'x8' 8'x10' 9'x12' 100% jute handloom woven



MOG0436



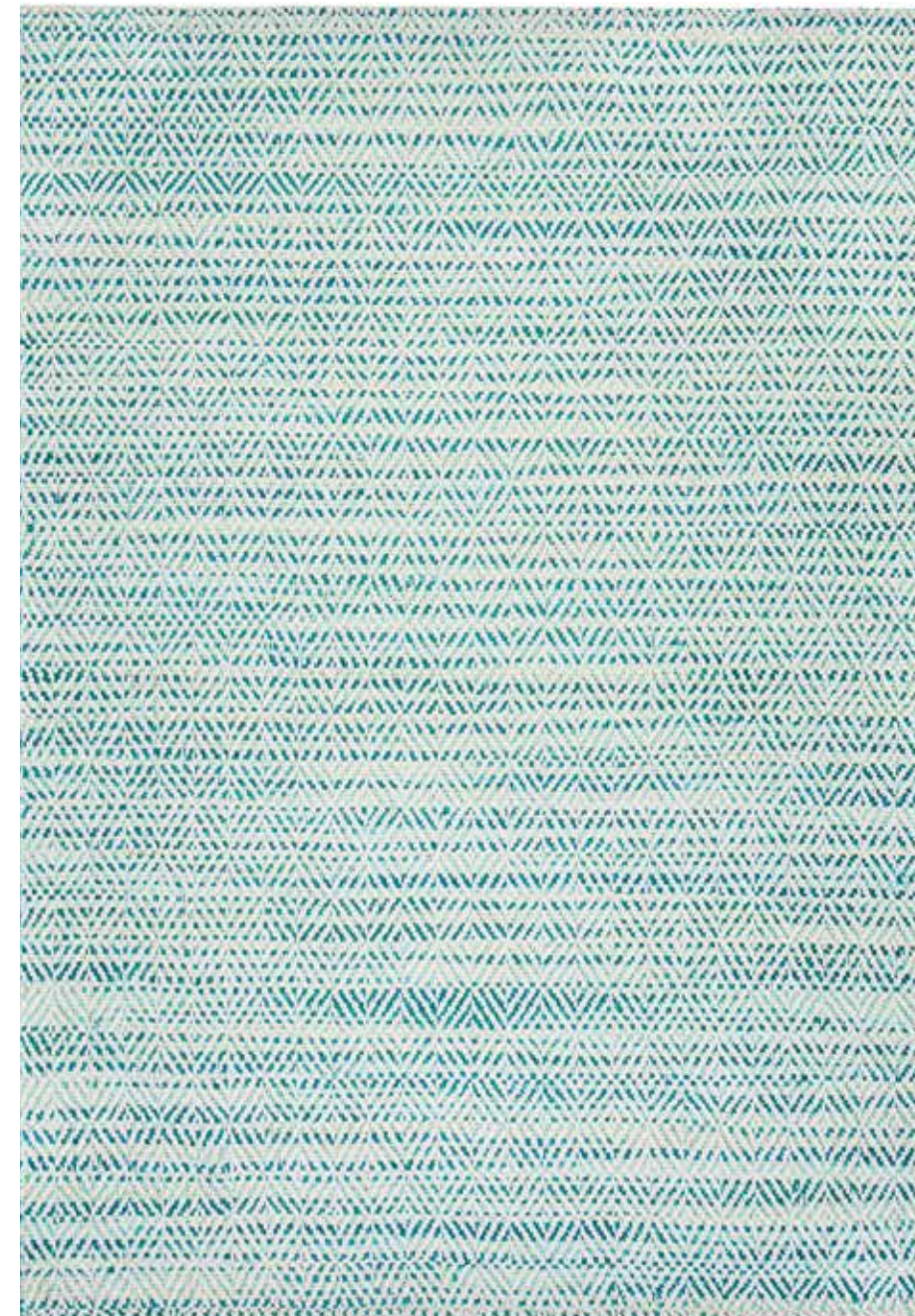
MOG0435

5'x8' 8'x10' 100% jute handloom woven



MOG0323

5'x8' 8'x10' 100% jute handloom woven



MOG0414

5'x8' 8'x10' 100% jute handloom woven



MOG0414



MOG1030



MOG1031

4'x6' 5'x8' 8'x10' 100% jute handloom woven



MOG1030

4'x6' 5'x8' 8'x10' 100% jute handloom woven



MOG0336

4'x6' 2.5'x8' 5'x8' 8'x10' 9'x12' 10'x14' 100% jute handloom woven



MOG0374

2.5'x8' 4'x6' 5'x8' 8'x10' 9'x12' 100% jute handloom woven

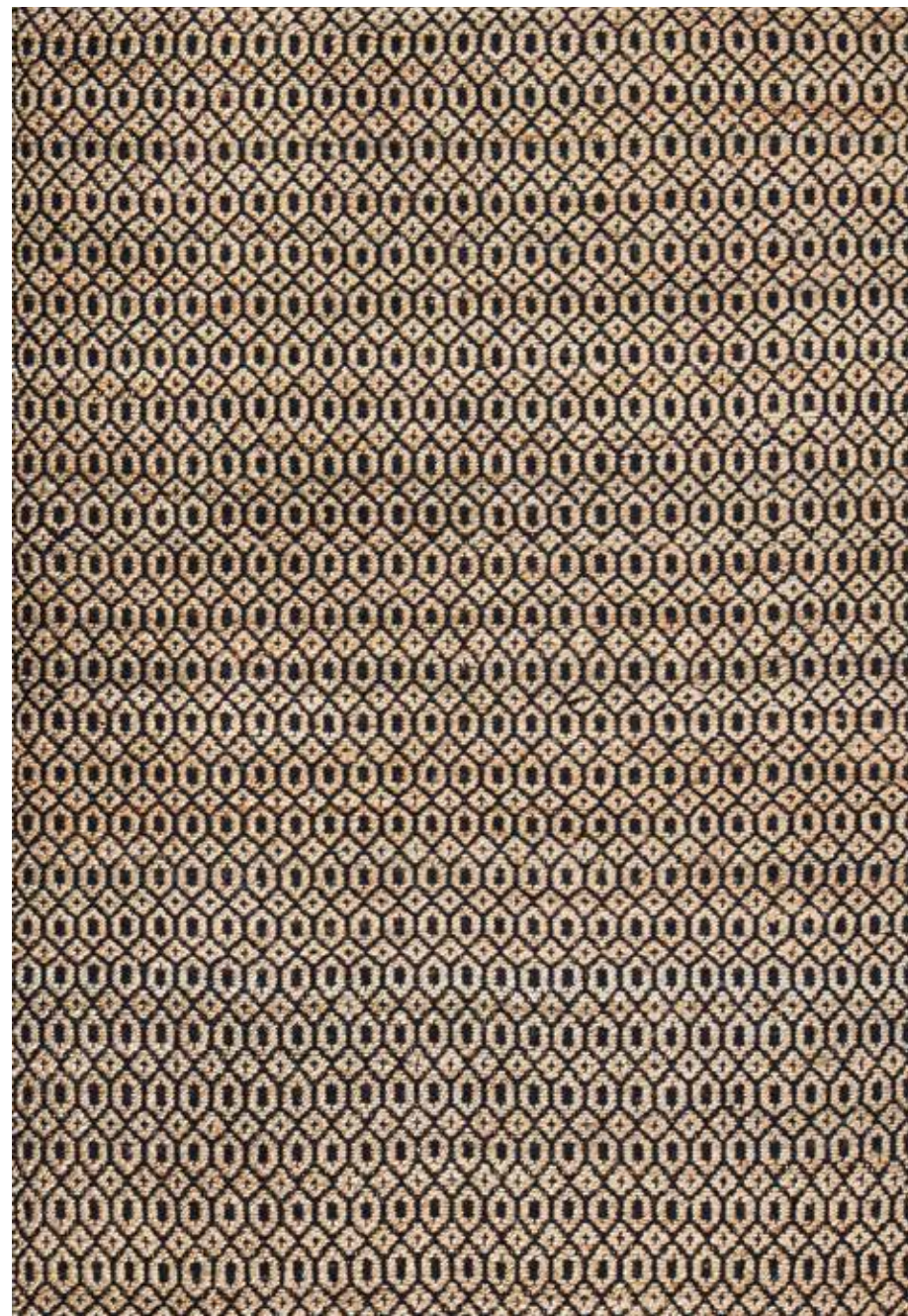


MOG0375

2.5'x8' 4'x6' 5'x8' 8'x10' 9'x12' 100% jute handloom woven



MOG0336

**MOG0388**

4'x6' 5'x8' 8'x10' 70% jute 30% cotton handloom woven

**MOG0400**

4'x6' 5'x7' 8'x10' 100% jute handloom woven

**MOG0403**

5'x8' 8'x10' 100% jute handloom woven

**MOG0400**

WOOL BLENDS COLLECTION

A brilliant juxtaposition of wool and other materials for a winning combination of textures and style. Handloom woven by skilled village weavers who apply vintage weaving techniques to create fresh designs with a timeless feel.

WEAVING TECHNIQUES

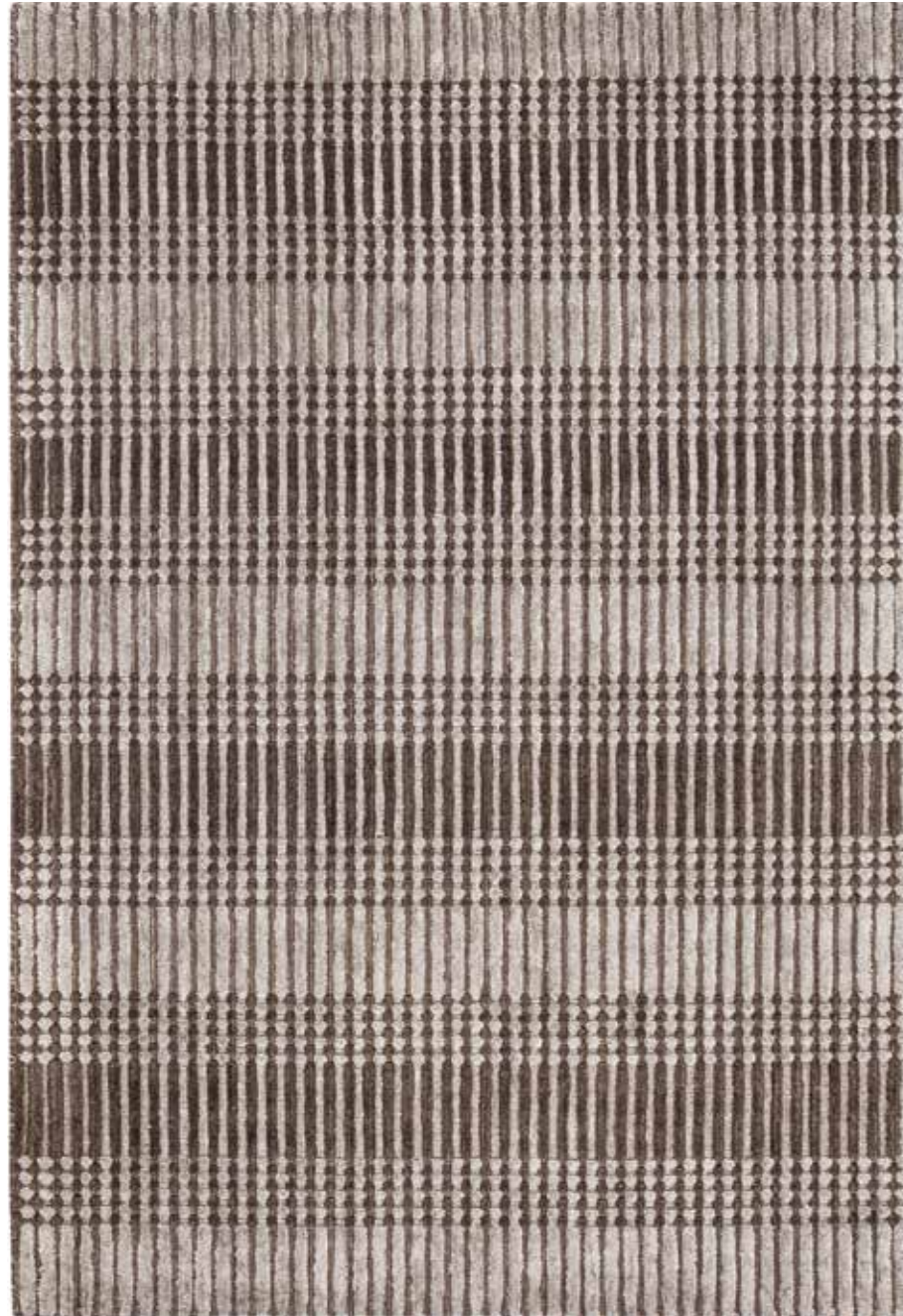
Handloom Woven

MATERIALS

- Wool
- Jute
- Nylon
- Polyester
- Cotton

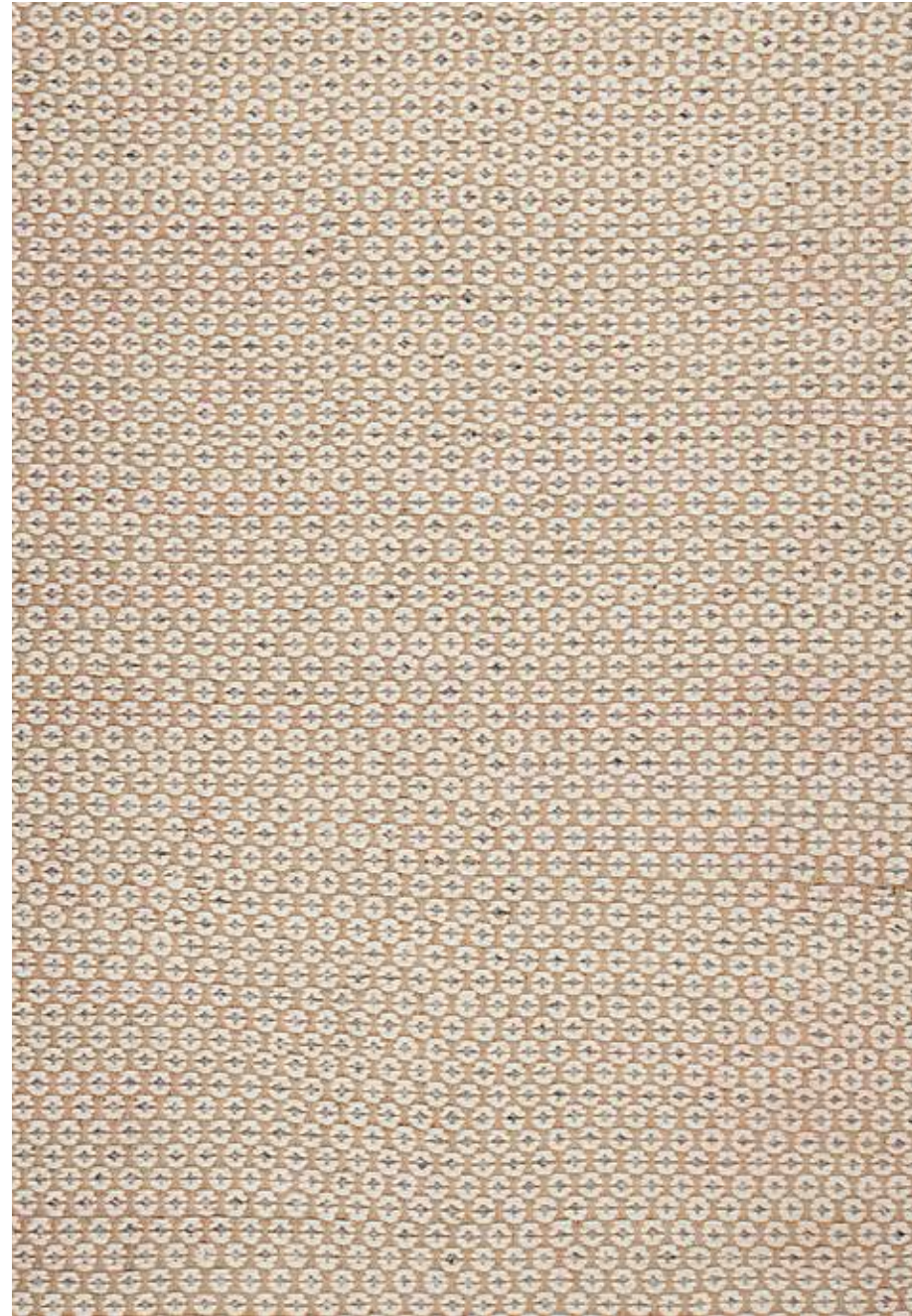
Rug pad recommended





MOG0426

5'x8' 8'x10' 50% wool 30% nylon 20% jute handloom woven



MOG0377

5'x8' 8'x10' 70% jute 30% wool handloom woven



MOG0359

5'x8' 8'x10' 9'x12' 80% wool 20% jute handloom woven



MOG0308

2'x3' 2.5'x12' 3'x5' 4'x6' 2.5'x8' 5'x8' 60% wool 40% jute handloom woven
8'x10' 9'x12' 10'x14'



MOG0432



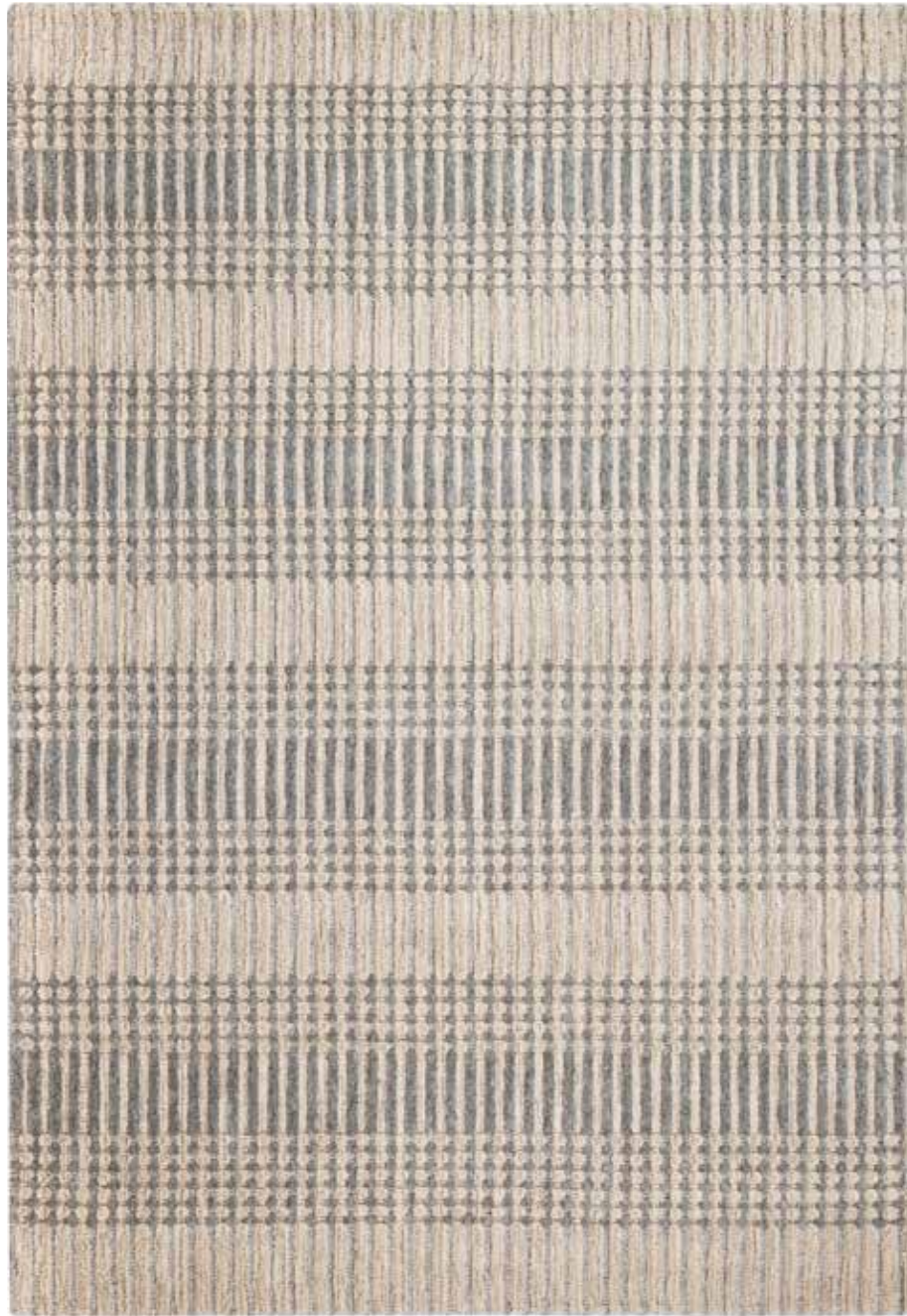
MOG0389

4'x6' 5'x8' 8'x10' 60% jute 40% wool handloom woven

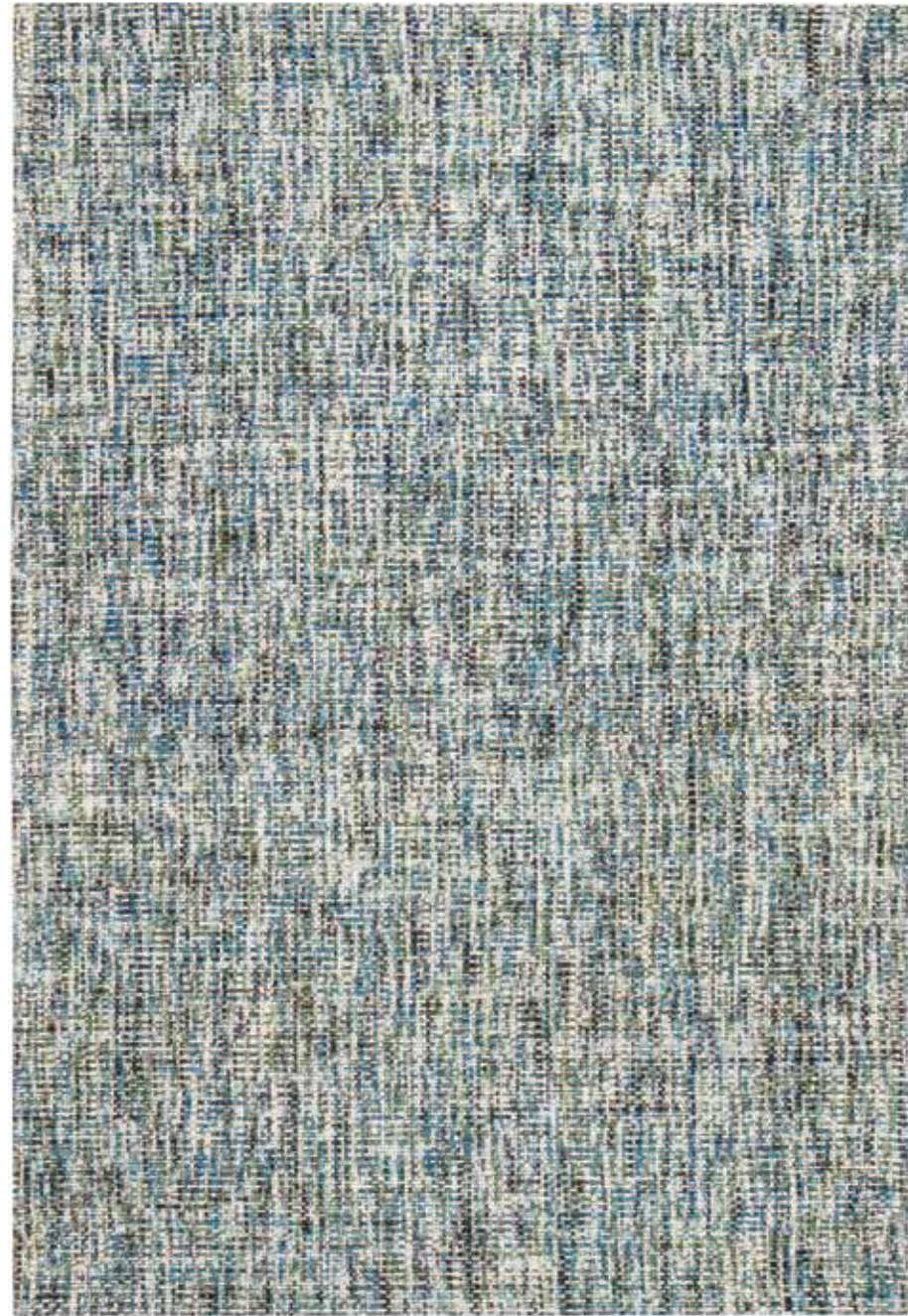


MOG0404

2.5'x8' 5'x8' 8'x10' 9'x12' 73% jute 27% wool handloom woven

**MOG0427**

5'x8' 8'x10' 50% wool 30% nylon 20% jute handloom woven

**MOG0430**

5'x8' 8'x10' 80% wool 20% polyester handloom woven

**MOG0432**

5'x8' 8'x10' 9'x12' 60% wool 35% cotton 5% polyester handloom woven

**MOG0430**

AZURE

COLLECTION

We've taken one of the U.S.A.'s biggest contributions to western civilization—denim— and fused it with a variety of sustainable, natural and upcycled materials to create cool, casual and durable rugs. The denim in this collection is upcycled from the denim industry and it strikes a perfectly balanced look with these complementary materials.

WEAVING TECHNIQUES

Handloom Woven
Hand Tufted
Braided

MATERIALS

Upcycled Denim
Jute
Cotton
Post-Consumer PET

Rug pad recommended



**MOG1032**

4'x6' 2.5'x8' 5'x8' 8'x10' 60% upcycled denim handloom woven
9'x12' 10'x14' 40% jute

**MOG0371**

4'x6' 5'x7' 8'x10' 60% upcycled denim 40% jute handloom woven

**MOG1116**

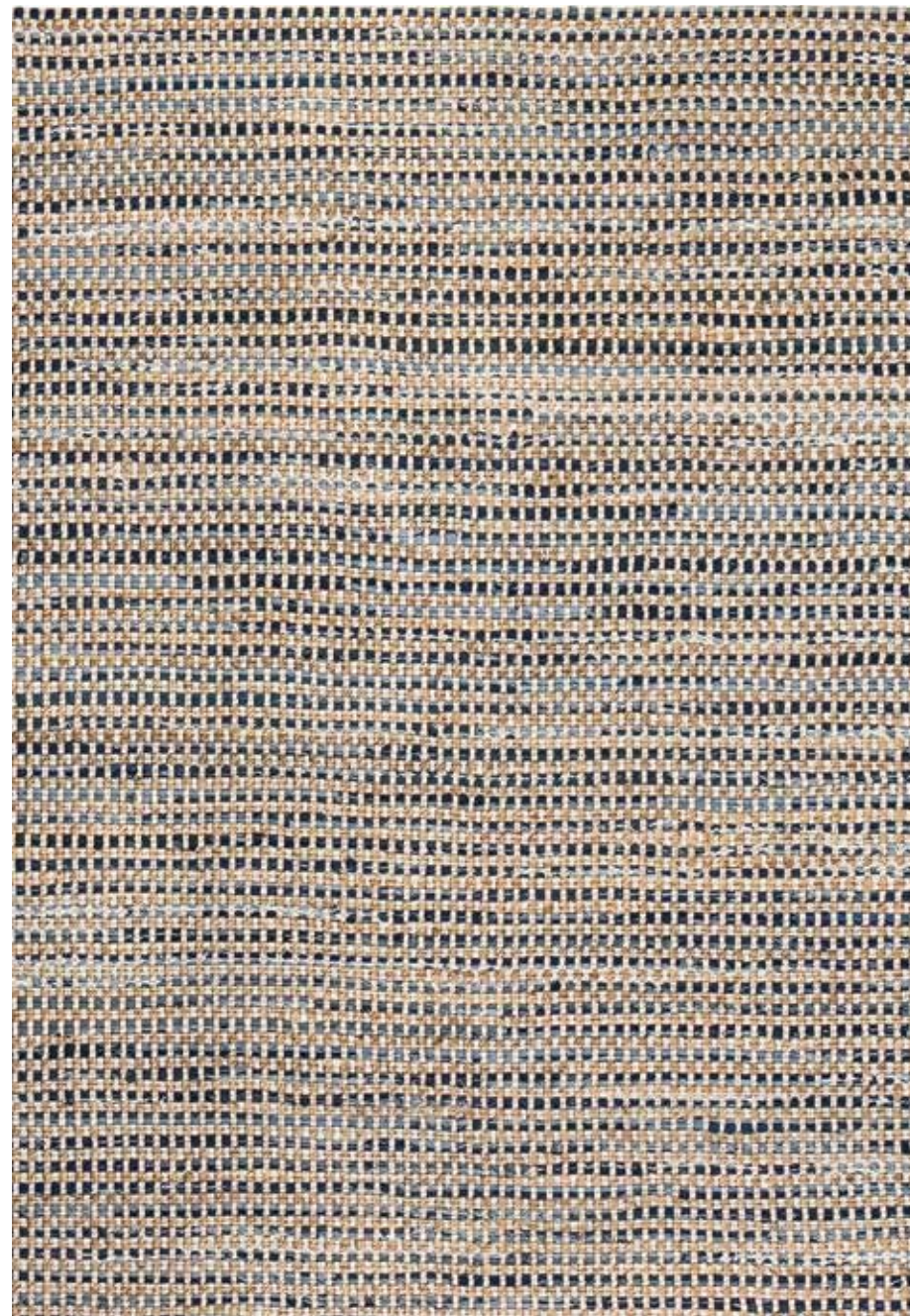
5'x8' 8'x10' 60% upcycled denim 40% post-consumer PET hand tufted



MOG1116

**MOG1115**

5'x8' 8'x10' 60% upcycled denim 40% post-consumer PET hand tufted

**MOG1033**

4'x6' 5'x8' 8'x10' 50% jute 40% upcycled denim 10% cotton handloom woven

**MOG1117**

5'x8' 8'x10' 60% upcycled denim 20% jute hand tufted
20% post-consumer PET

**MOG1124**

5'x8' 8'x10' 65% upcycled denim 35% post-consumer PET hand tufted



MOG1119

5'x8' 8'x10' 60% upcycled denim 40% post-consumer PET hand tufted



MOG1120

5'x8' 8'x10' 65% post-consumer PET 35% upcycled denim hand tufted



MOG1121

5'x8' 8'x10' 70% upcycled denim 30% jute hand tufted



MOG1033

CORNUCOPIA

COLLECTION

An array of yarns and materials are combined to create a dynamic feel and aesthetic in the Cornucopia collection. A few of the compelling materials in play are the shimmer and silky softness of bamboo viscose, the natural, earthy foundation of jute and recycled silk from Indian saree weaving facilities.

WEAVING TECHNIQUES

- Braided
- Handloom Woven
- Hand Tufted
- Jacquard Loom Woven
- Machine Tufted
- Pit Loom Woven

MATERIALS

- Cotton (Upcycled, Recycled, Virgin)
- Jute
- Microfiber
- Nylon
- Post-consumer PET
- Polyester (Recycled, Virgin)
- Recycled Newspaper
- Recycled Silk
- Viscose (Recycled, Virgin, made from Bamboo)
- Wool

Rug pad recommended

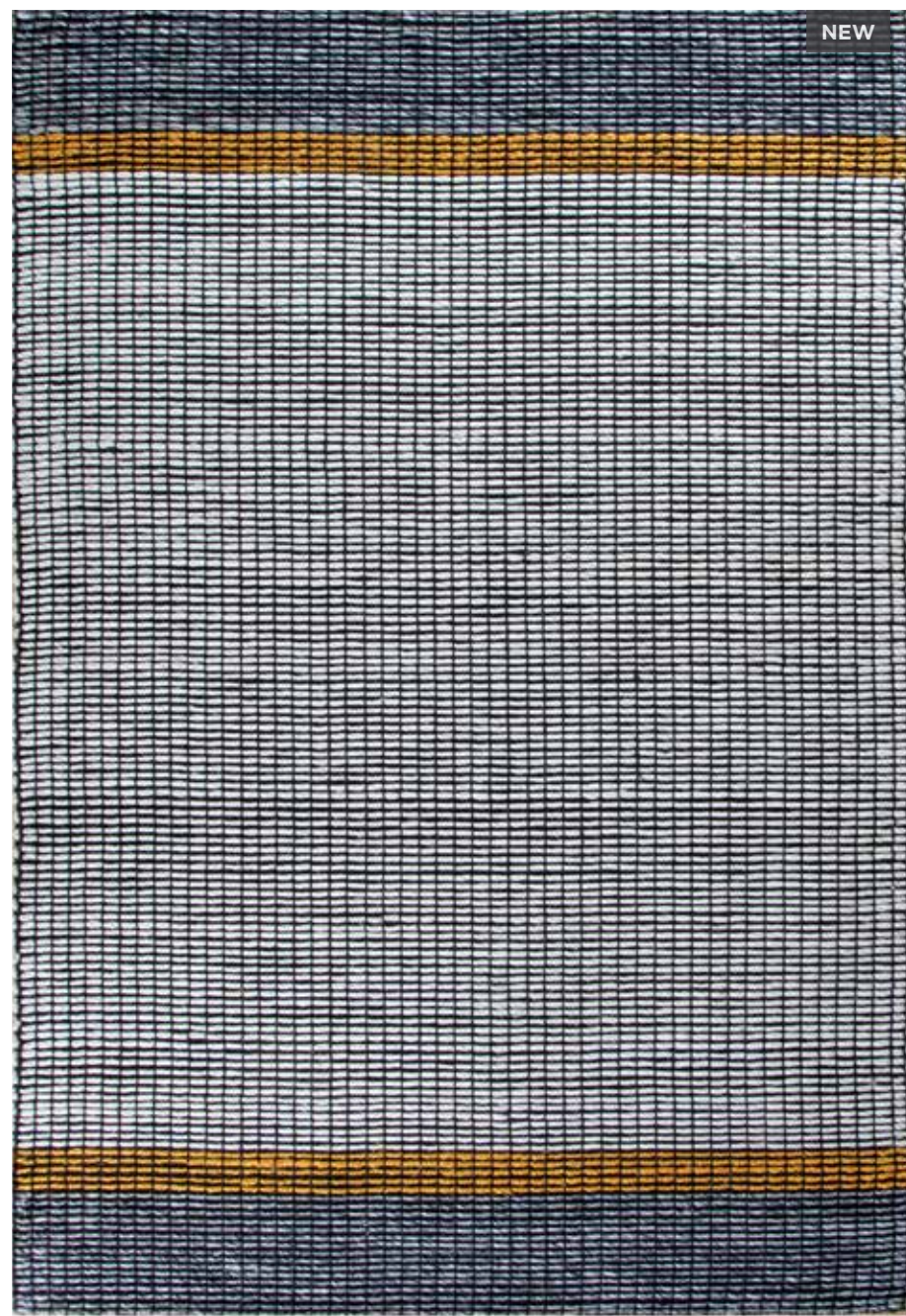




NEW

MOG0473

5'x8' 8'x10 60% polyester 40% jute handloom woven



NEW

MOG0476

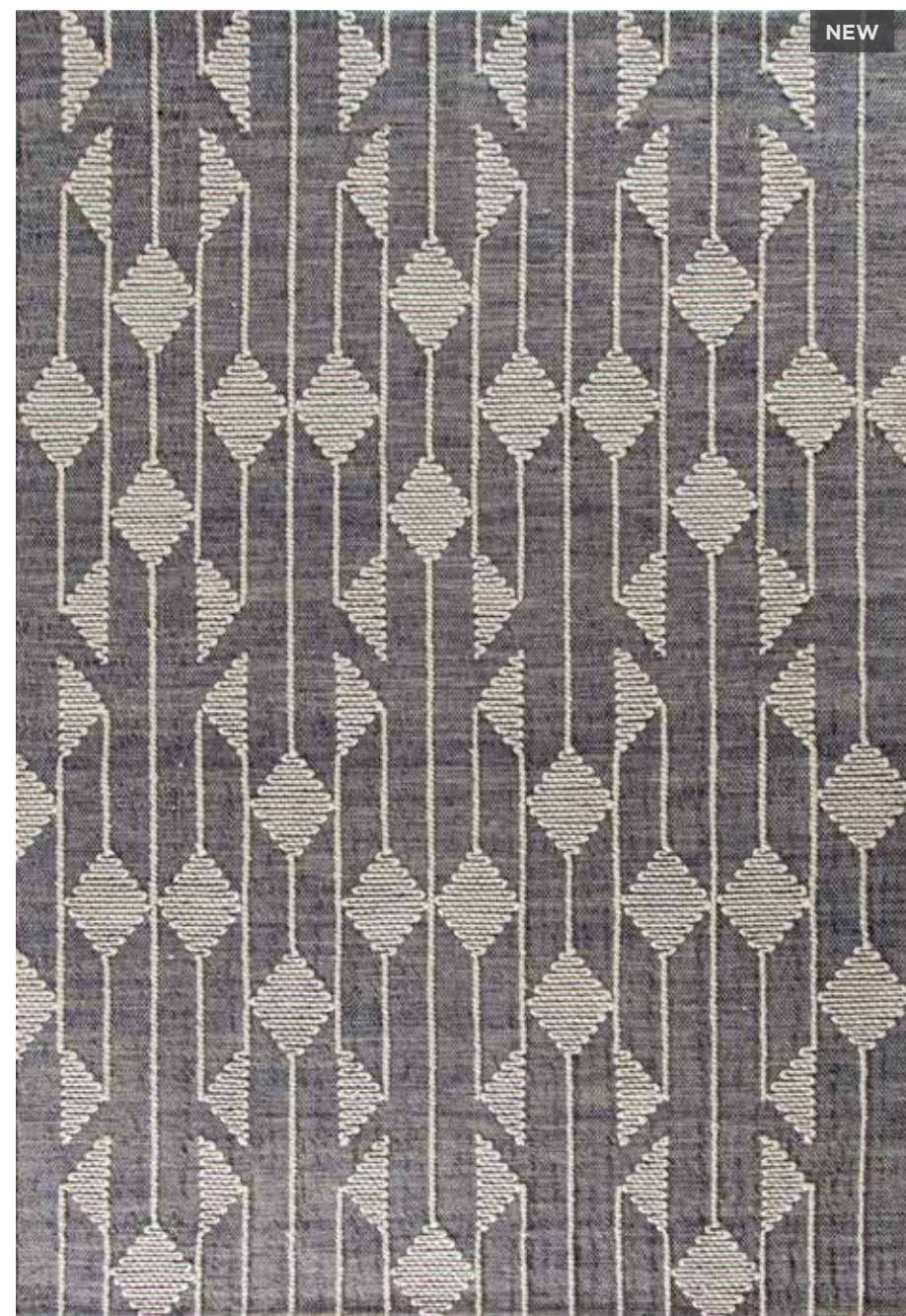
5'x8' 8'x10 70% jute 30% polyester handloom woven



NEW

MOG0481

5'x8' 8'x10 60% wool 30% jute 10% cotton handloom woven



NEW

MOG0482

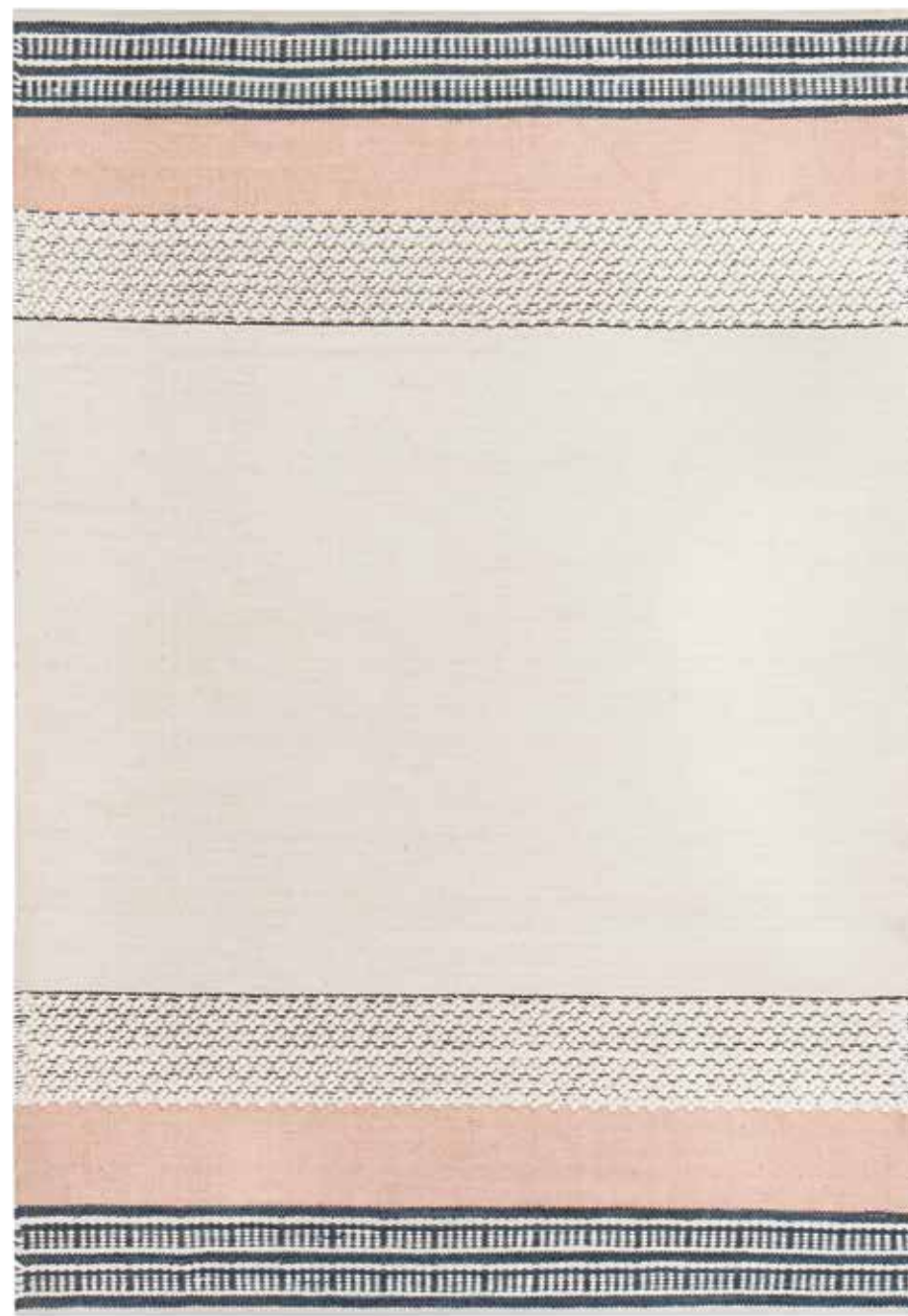
5'x8' 8'x10 70% jute 30% polyester handloom woven

NEW



MOG0483

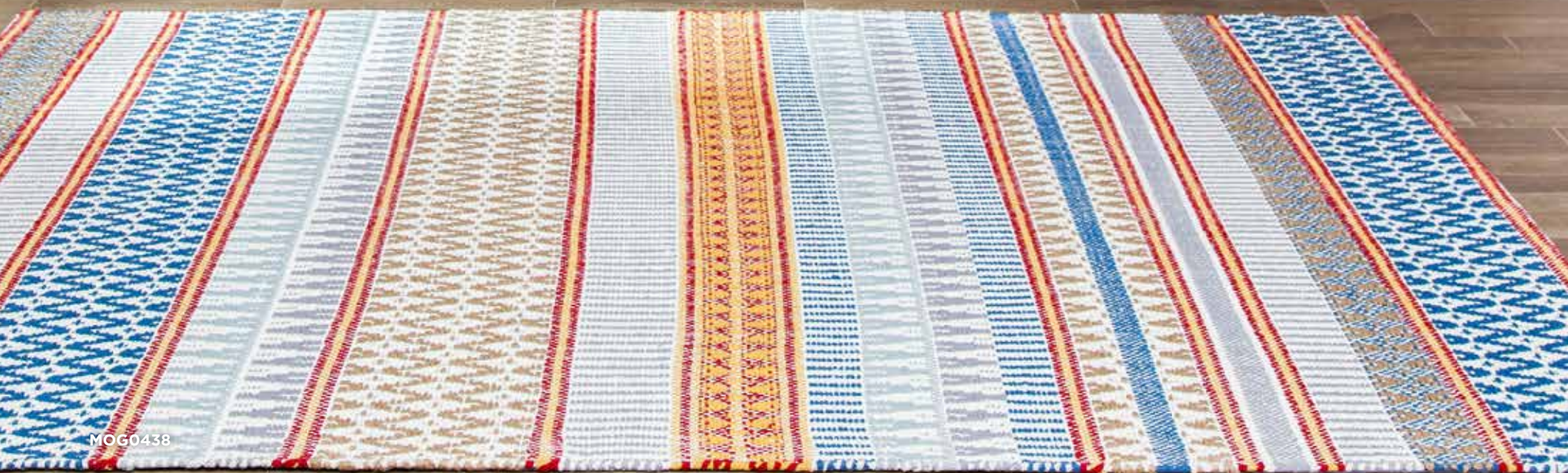
5'x8' 8'x10 60% polyester 40% jute handloom woven



MOG0440

5'x7' 8'x10 60% jute 25% wool 15% cotton handloom woven



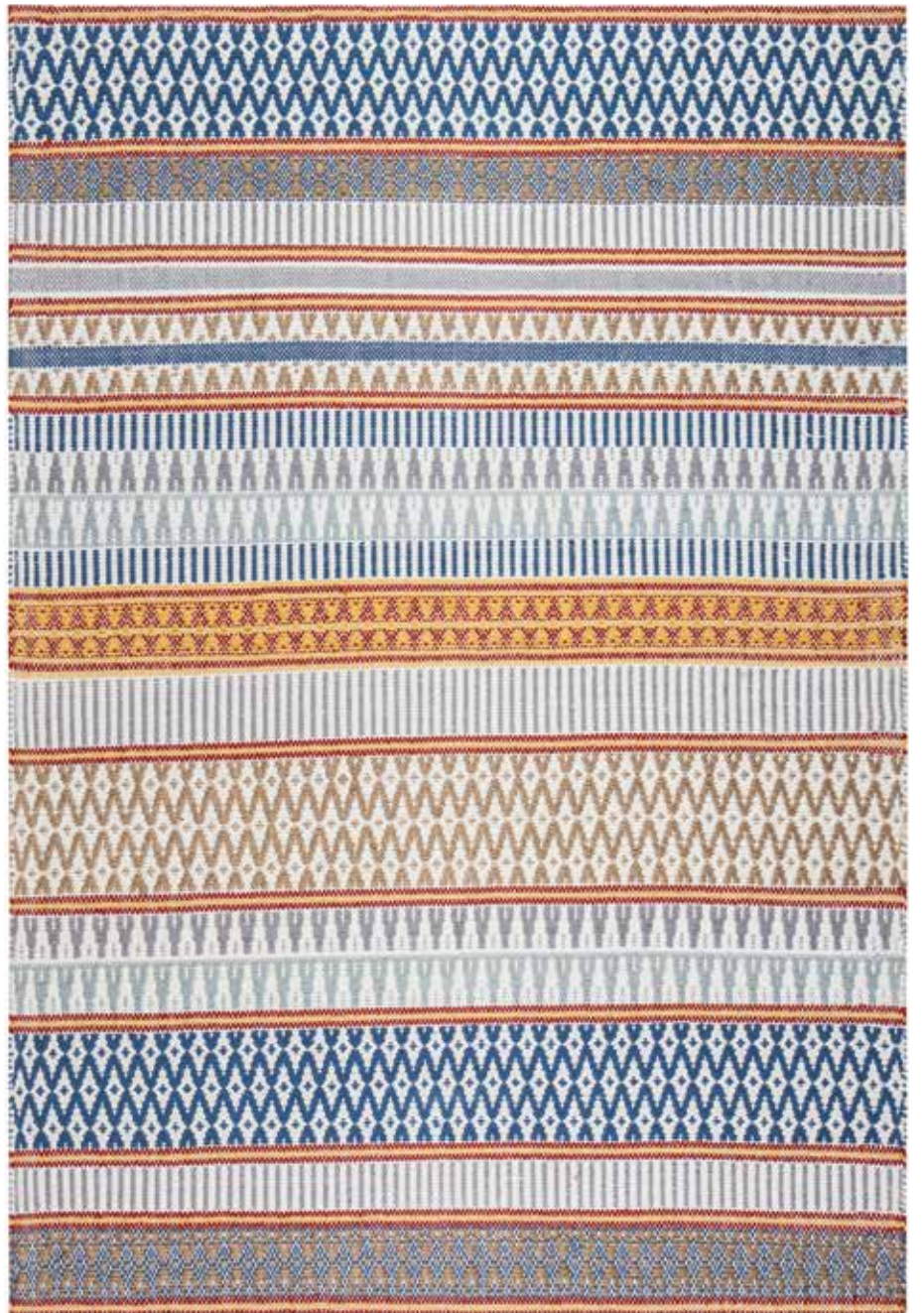


MOG0438



MOG0439

5'x7' 8'x10' 9'x12' 60% jute 25% wool 15% cotton handloom woven

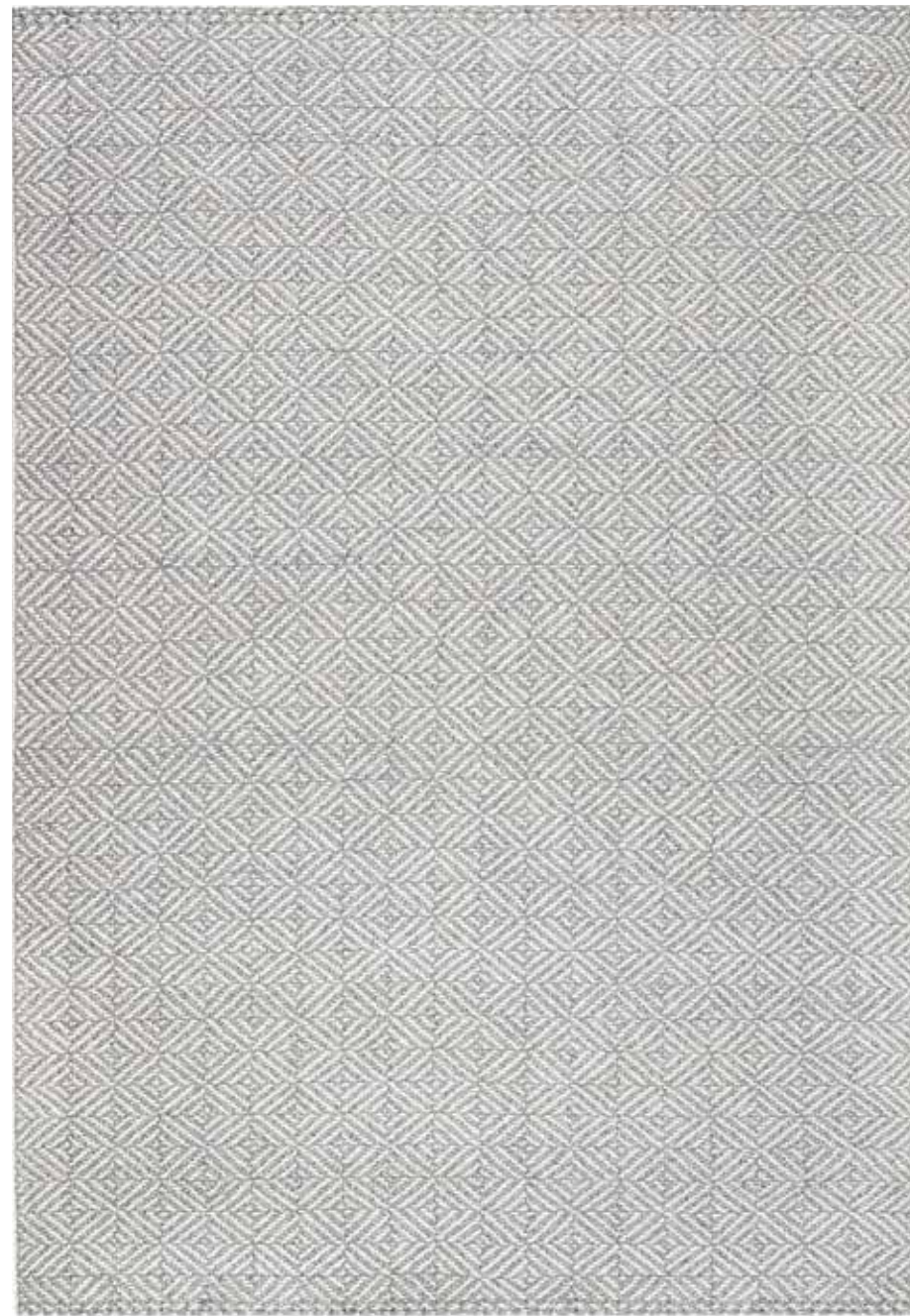


MOG0438

5'x7' 8'x10 70% cotton 20% jute 10% polyester handloom woven



MOGO411



MOGO411

5'x8' 2.5'x8' 8'x10' 56% post-consumer PET 44% jute handloom woven



MOGO416

5'x8' 8'x10' 100% recycled cotton handloom woven



MOGO418

5'x8' 8'x10' 55% post-consumer PET 27% recycled viscose 9% recycled silk 9% recycled polyester jacquard loom woven

**MOG0756**

4' x 6' 5' x 7'6" 7'6" x 9'6" 80% polyester 20% cotton hand woven

**MOG0757**

4' x 6' 5' x 7'6" 7'6" x 9'6" 80% polyester 20% cotton hand woven

**MOG0850**

4' x 6' 5' x 7' 7'6" x 9' 60% jute 30% polyester 10% cotton hand woven

**MOG0756**

**MOG0851**

4' x 6' 5' x 7' 7'6" x 9' 60% jute 30% polyester 10% cotton hand woven

**MOG0852**

4' x 6' 5' x 7' 7'6" x 9' 60% jute 30% polyester 10% cotton hand woven

**MOG0384**

2.5'x8' 5'x7' 8'x10' 9'x12' 65% jute 25% wool 10% cotton handloom woven

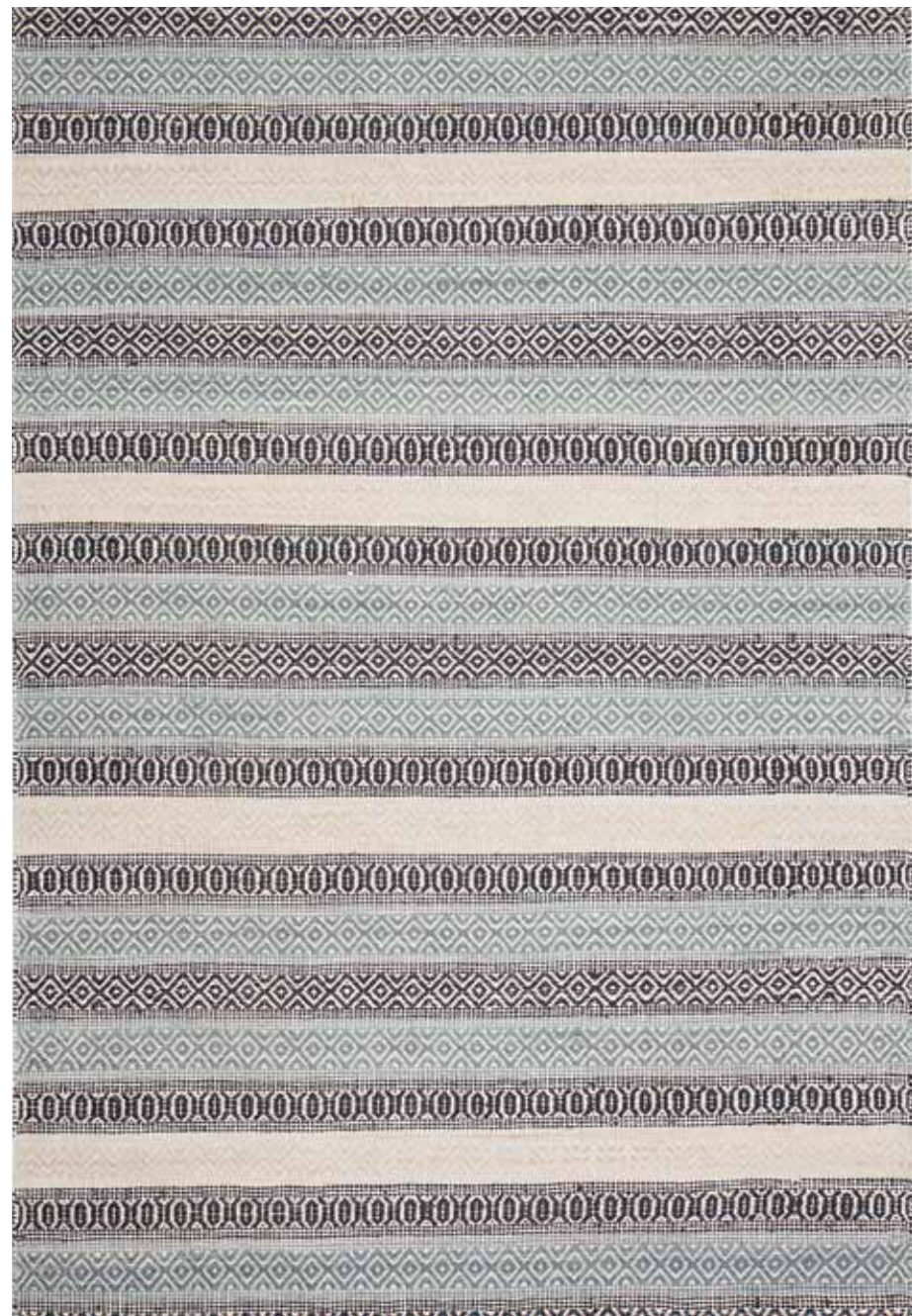
**MOG0385**

2.5'x8' 5'x7' 8'x10' 9'x12' 65% jute 25% wool 10% cotton handloom woven



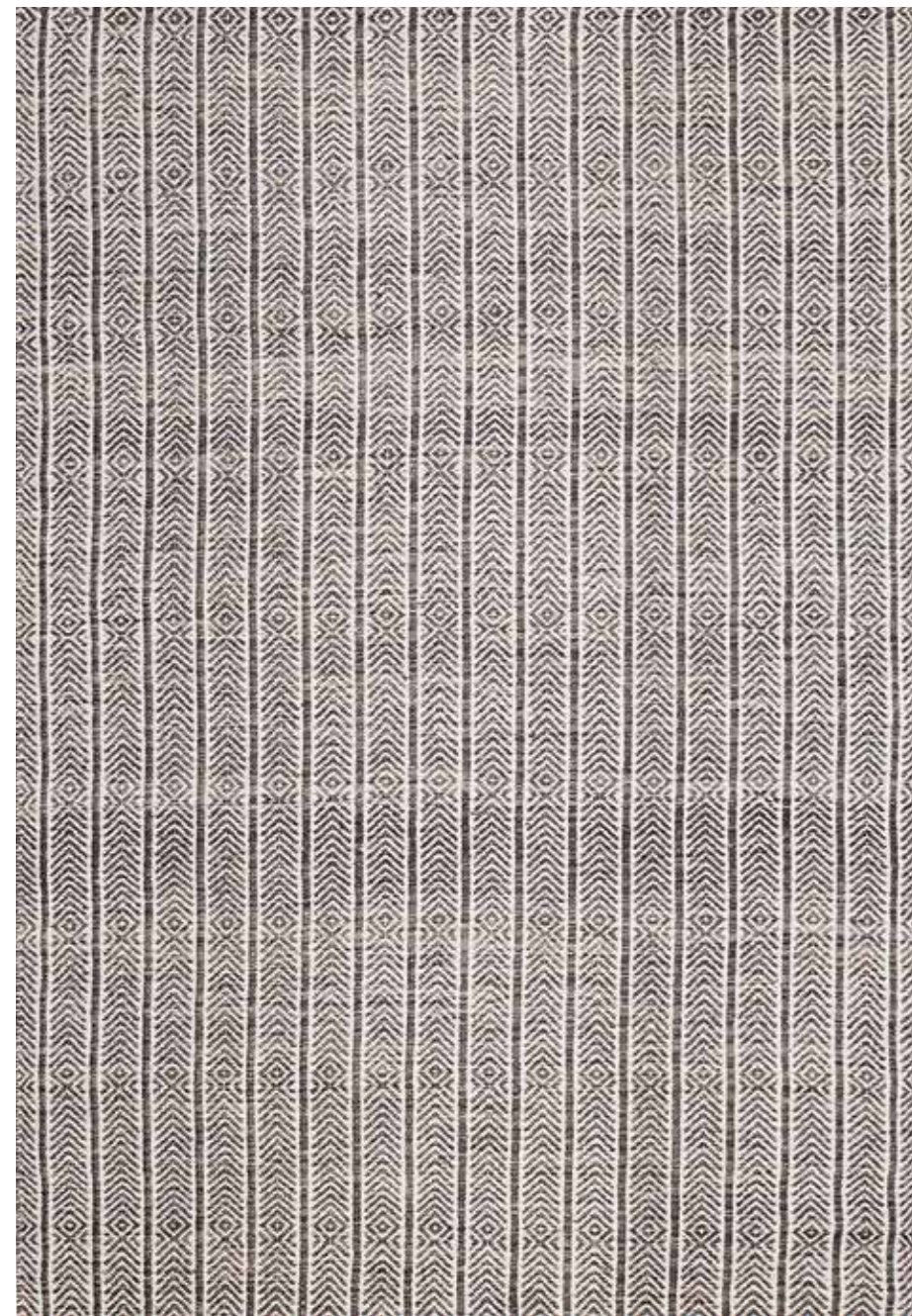
MOG0387

2.5'x8' 5'x7' 8'x10' 9'x12' 65% jute 25% wool 10% cotton handloom woven



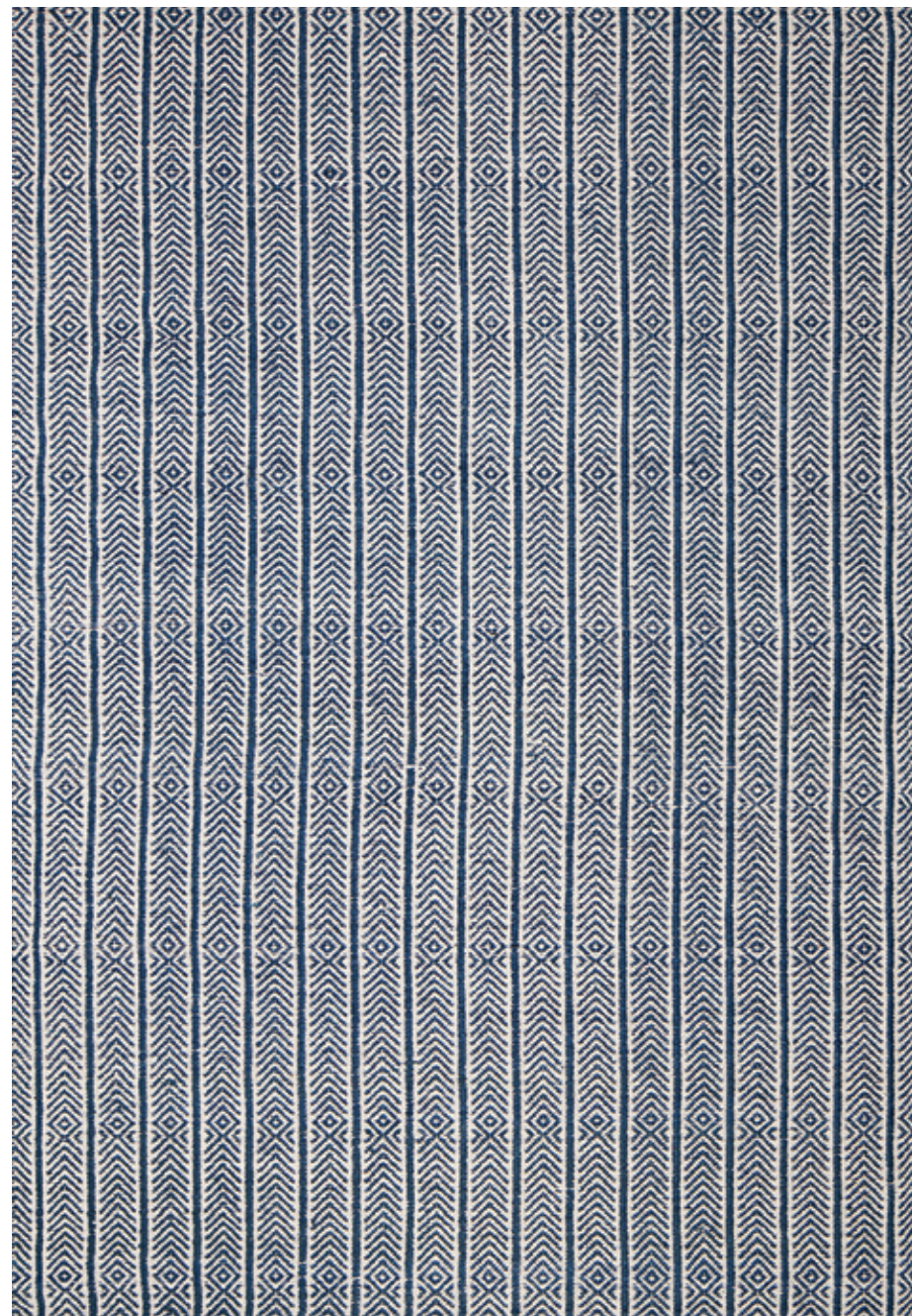
MOG0386

2.5'x8' 5'x7' 8'x10' 9'x12' 65% jute 25% wool 10% cotton handloom woven



MOG0382

2.5'x8' 5'x7' 8'x10' 9'x12' 60% cotton 40% jute handloom woven



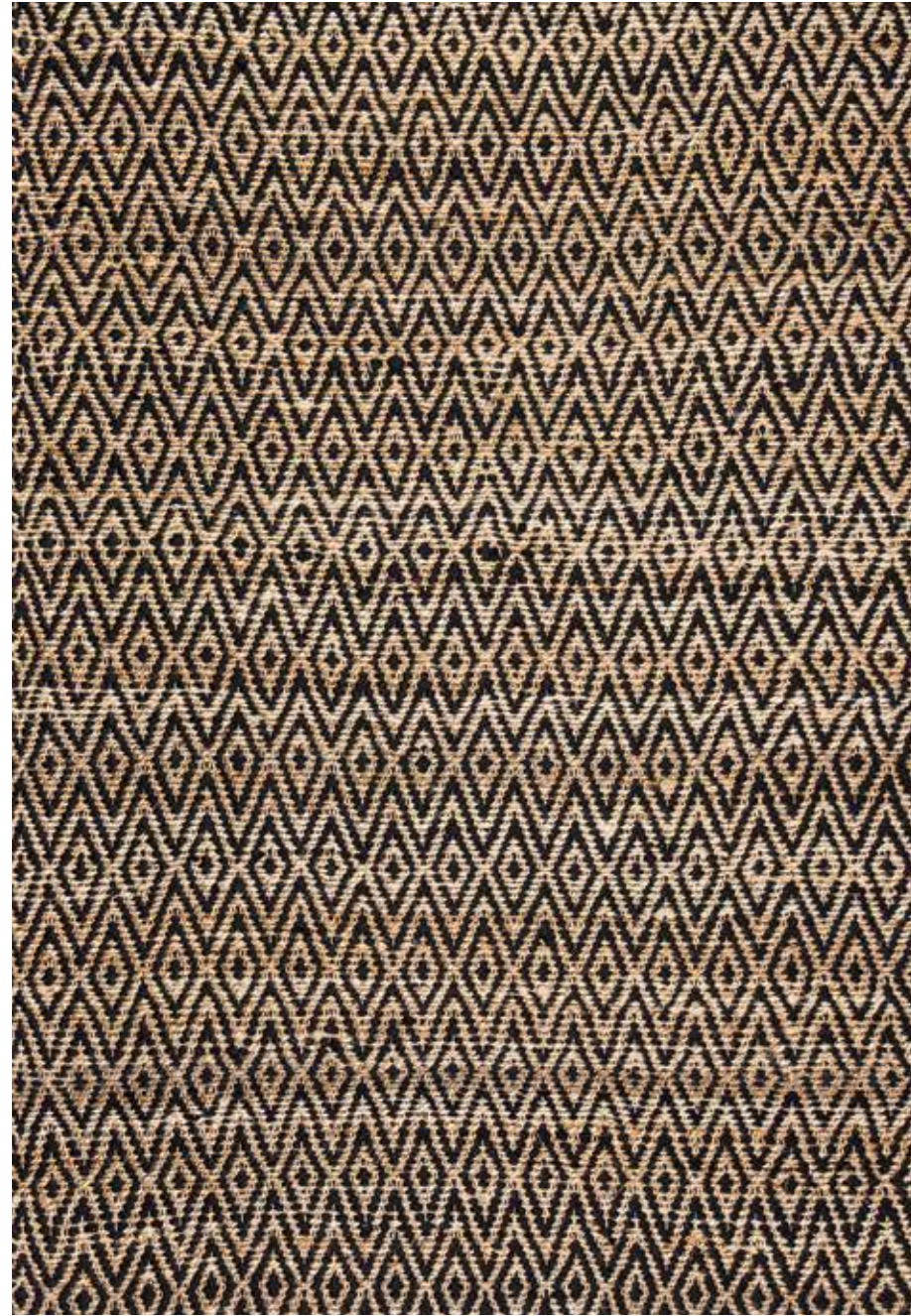
MOG0381

2.5'x8' 5'x7' 8'x10' 9'x12' 60% cotton 40% jute handloom woven



MOG0383

2.5'x8' 5'x7' 8'x10' 9'x12' 60% cotton 40% jute handloom woven



MOG0351

2.5'x8' 4'x6' 5'x8' 8'x10' 9'x12' 65% jute 35% cotton handloom woven



MOG0390

4'x6' 5'x8' 8'x10' 50% jute 50% post-consumer PET handloom woven



MOG0391

4'x6' 5'x8' 8'x10' 60% jute 40% cotton handloom woven



MOG0420



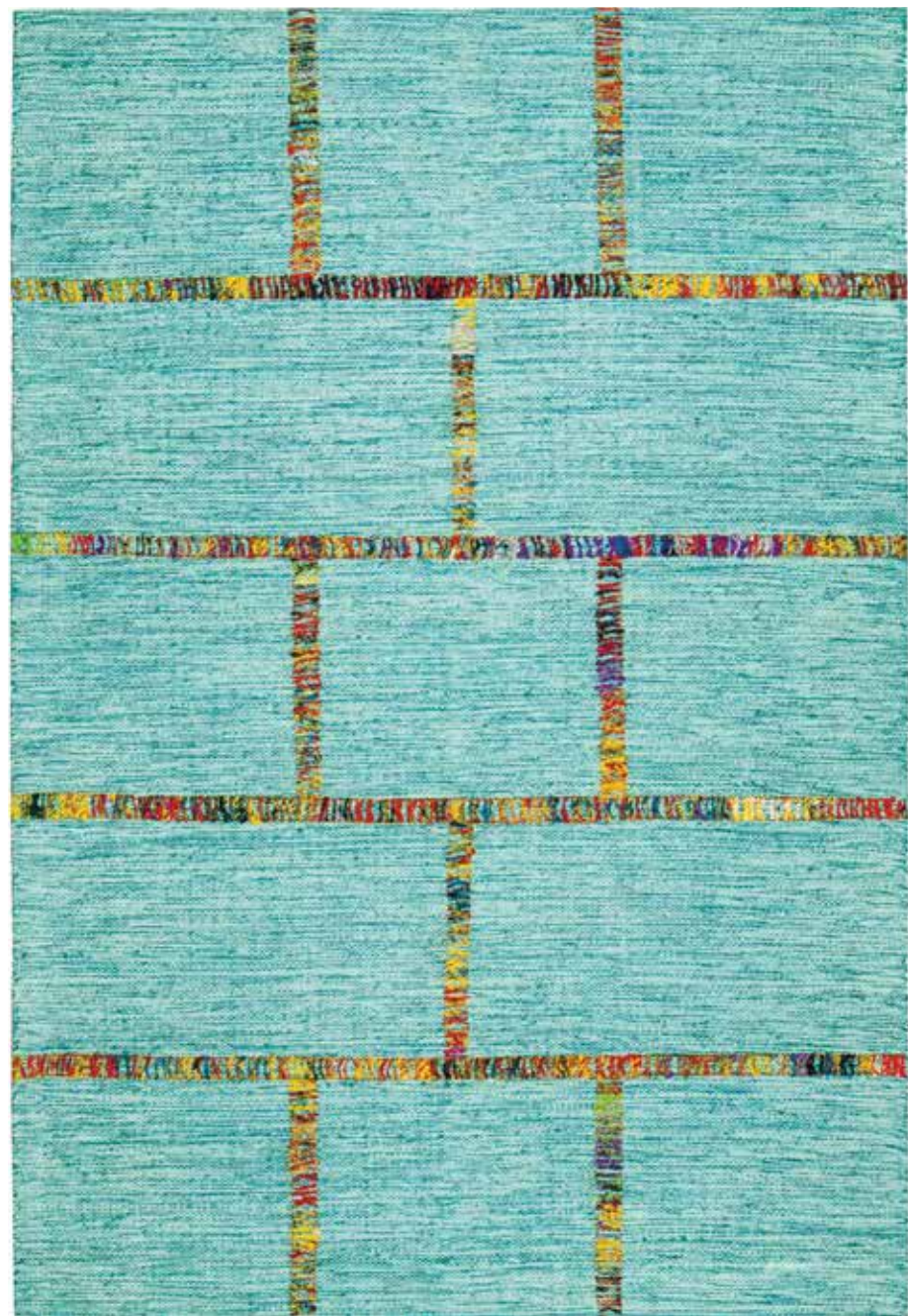
MOG0399

4'x6' 5'x8' 8'x10' 80% jute 20% cotton handloom woven



MOG0401

2.5'x8' 5'x8' 8'x10' 73% jute 27% post-consumer PET handloom woven



MOG0420

5'x8' 8'x10' 40% jute 40% cotton 12% recycled silk 4% recycled viscose 4% recycled polyester handloom woven

**MOG0405**

2.5'x8' 5'x8' 8'x10' 75% jute 25% post-consumer PET handloom woven

**MOG0407**

2.5'x8' 5'x8' 8'x10' 63% jute 37% post-consumer PET handloom woven

**MOG0408**

2.5'x8' 5'x8' 8'x10' 56% jute 44% recycled newspaper handloom woven

**MOG0410**

2.5'x8' 5'x8' 8'x10' 52% recycled newspaper 48% post-consumer PET handloom woven

**MOG0853**

4' x 6' 5' x 7' 7'6" x 9' 60% jute 30% polyester 10% cotton hand woven

**MOG0855**

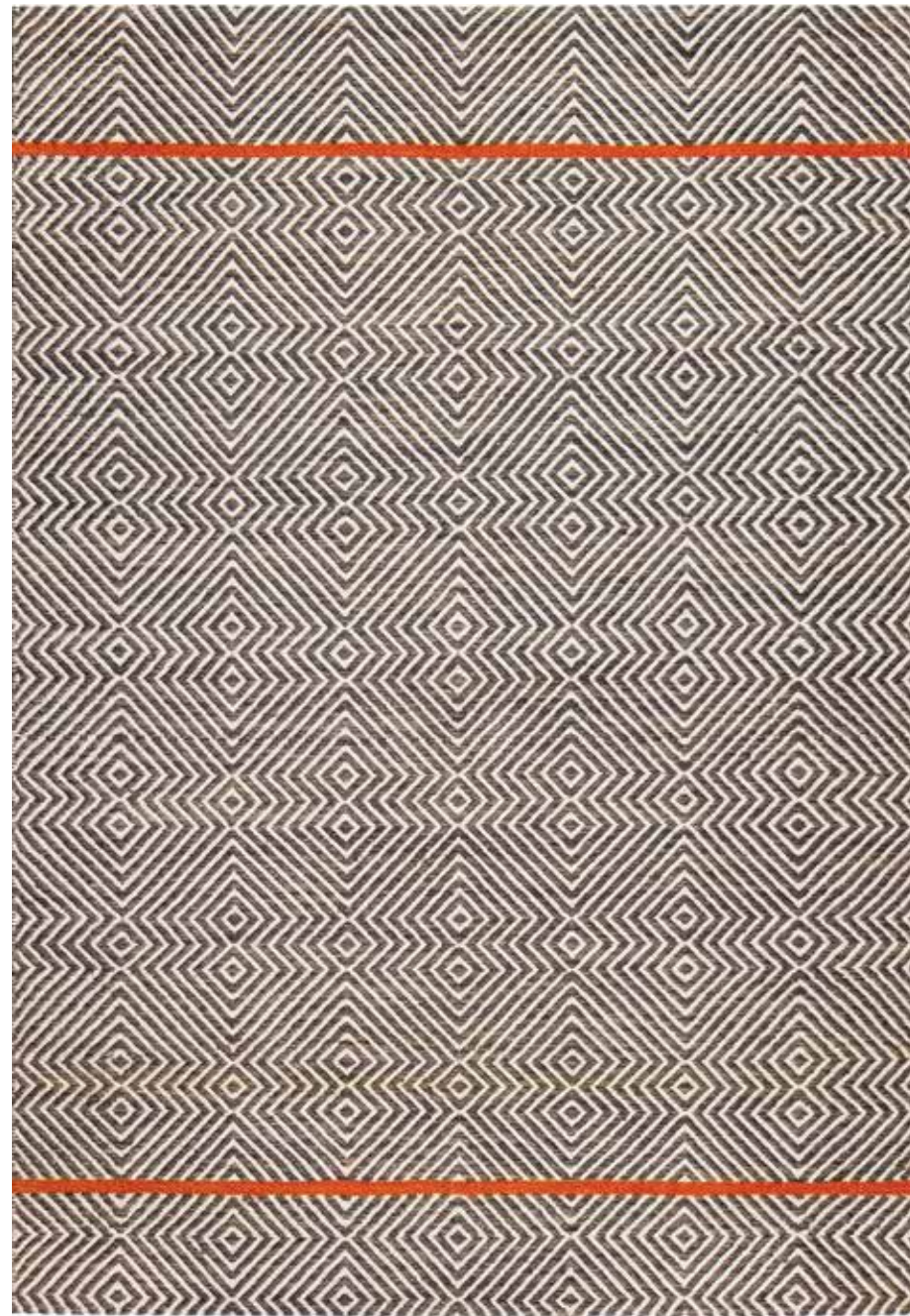
4' x 6' 5' x 7' 7'6" x 9' 60% jute 30% polyester 10% cotton hand woven

**MOG0422**

5'x8' 8'x10' 60% post-consumer PET 40% jute handloom woven

**MOG0423**

5'x8' 8'x10' 70% post-consumer PET 30% jute handloom woven

**MOG0428**

5'x8' 8'x10' 55% jute 40% cotton 5% wool-viscose blend handloom woven

**MOG0429**

2.5'x8' 5'x8' 8'x10' 30% jute 30% viscose 30% wool 10% nylon handloom woven

**MOG0431**

5'x8' 8'x10' 80% jute 15% cotton 5% polyester handloom woven

**MOG0614**

4'x6' 2.5'x8' 5'x7' 8'x10' 9'x12' 10'x14' 100% bamboo viscose machine tufted



MOG0446

5'x7' 8'x10' 60% jute 25% wool 15% cotton



MOG1102

5' x 7' 7'6" x 9' 50% polyester 30% wool 20% cotton



MOG0451

3'x5' 4'x6' 5'x8' 8'x10' 50% recycled paper 25% viscose 25% polypropylene hand tufted



MOG1102

**MOG1103**

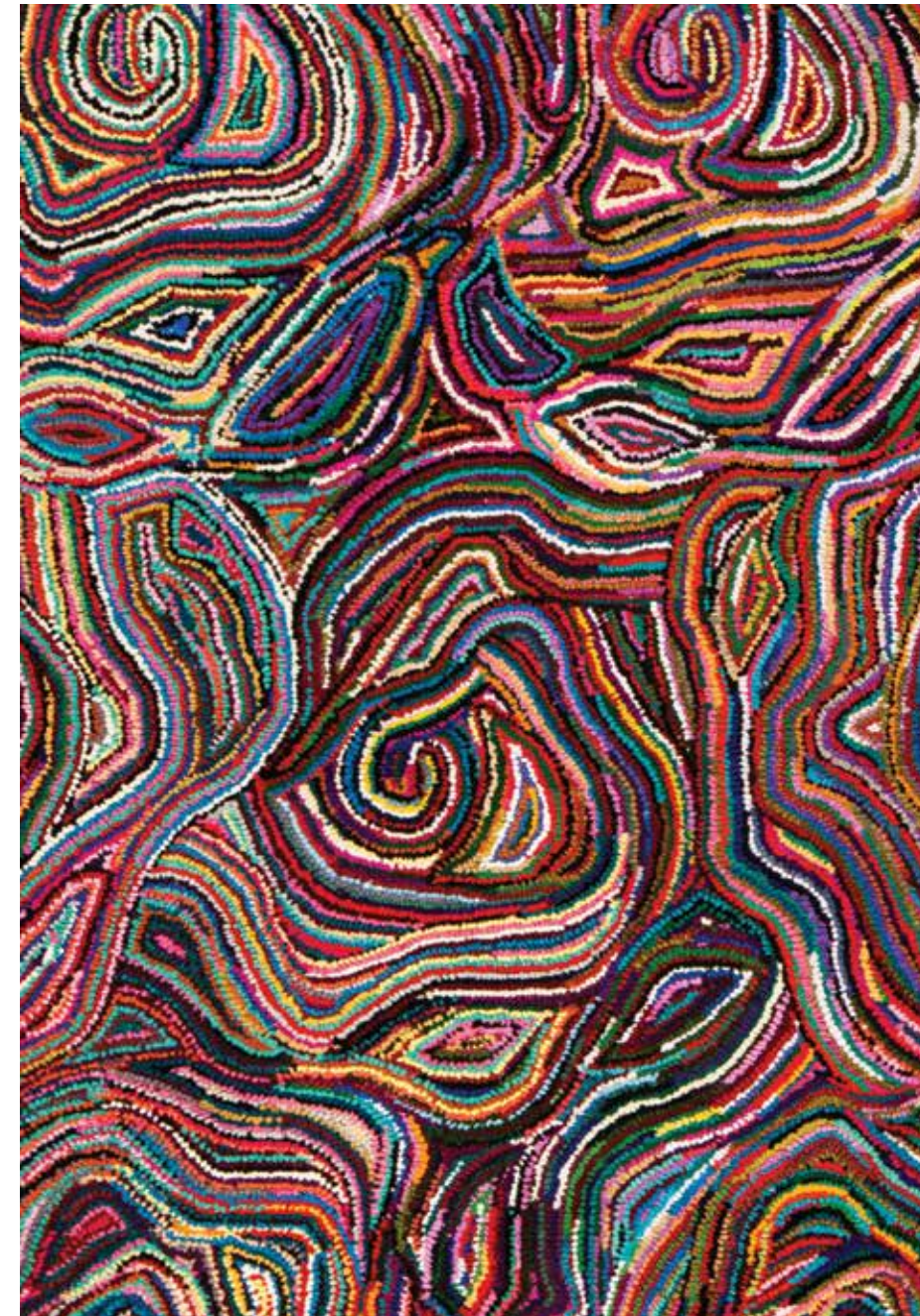
5' x 7' 7'6" x 9' 50% polyester 30% wool 20% cotton

**MOG0856**

4' x 6' 5' x 7' 7'6" x 9' 60% jute 30% polyester 10% cotton

**MOG0857**

4' x 6' 5' x 7' 7'6" x 9' 60% jute 30% polyester 10% cotton

**MOG1013**

4'x6' 5'x8' 8'x10' 100% upcycled cotton hand tufted

ROUNDS & OVALS

COLLECTION

Searching for a round? Have a thing for ovals? We've curated a special collection just for you. Herein you'll find an array of magnificent materials, weaves and colors to choose from. What you won't find is a rug that is rectangular or square in shape. Because this is the Round & Oval collection. No squares—or rectangles—allowed.

WEAVING TECHNIQUES

Braided
Hand Tufted

MATERIALS

Jute
Upcycled Denim
Upcycled Cotton
Post-Consumer PET
Bamboo Viscose
Cotton

Rug pad recommended



NEW



MOG0479

4' round 6' round 8' round 100% recycled polyester braided

NEW



MOG0480

4' round 6' round 8' round 100% recycled polyester braided



MOG0480

**MOG0350**

4' round 6' round 8' round 40% jute 60% upcycled denim braided

**MOG0329**

4' round 6' round 8' round 6'x9' oval 100% jute braided

**MOG0340**

4' round 6' round 8' round 6'x9' oval 100% jute braided

**MOG0328**

4' round 6' round 8' round 6'x9' oval 100% jute braided

**MOG0363**

4' round 6' round 8' round 100% jute braided

**MOG0364**

4' round 6' round 8' round 100% jute braided

**MOG0362**

4' round 6' round 8' round 100% jute braided

**MOG0392**

4' round 6' round 8' round 40% upcycled denim 30% jute braided 30% post-consumer PET

**MOG0393**

4' round 6' round 8' round 100% jute braided

**MOG0394**

4' round 6' round 8' round 100% jute braided

**MOG0395**

6' round 8' round 60% jute 40% post-consumer PET braided

**MOG0396**

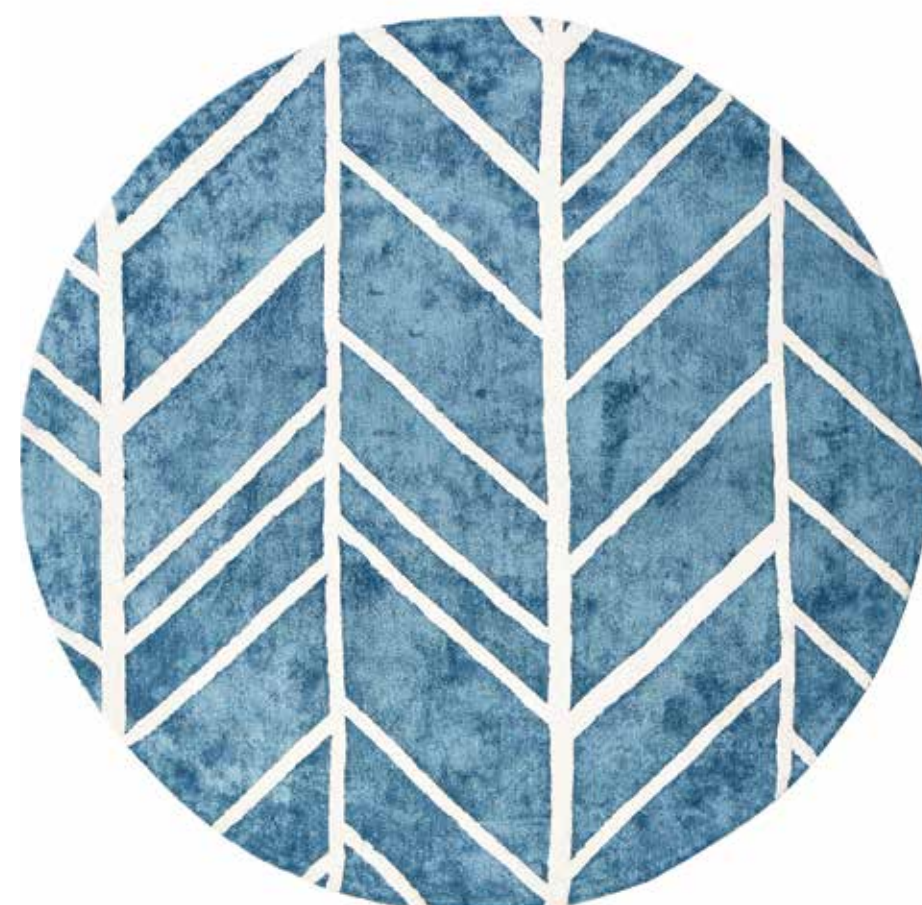
6' round 8' round 55% upcycled cotton 45% jute braided

**MOG0397**

4' round 6' round 8' round 60% upcycled cotton 40% jute braided

**MOG0398**

4' round 6' round 8' round 100% upcycled cotton braided

**MOG0614**

6' round 8' round 100% bamboo viscose machine tufted

**MOG0651**

4' round 6' round 8' round 50% bamboo viscose 50% cotton machine tufted



MOG0396



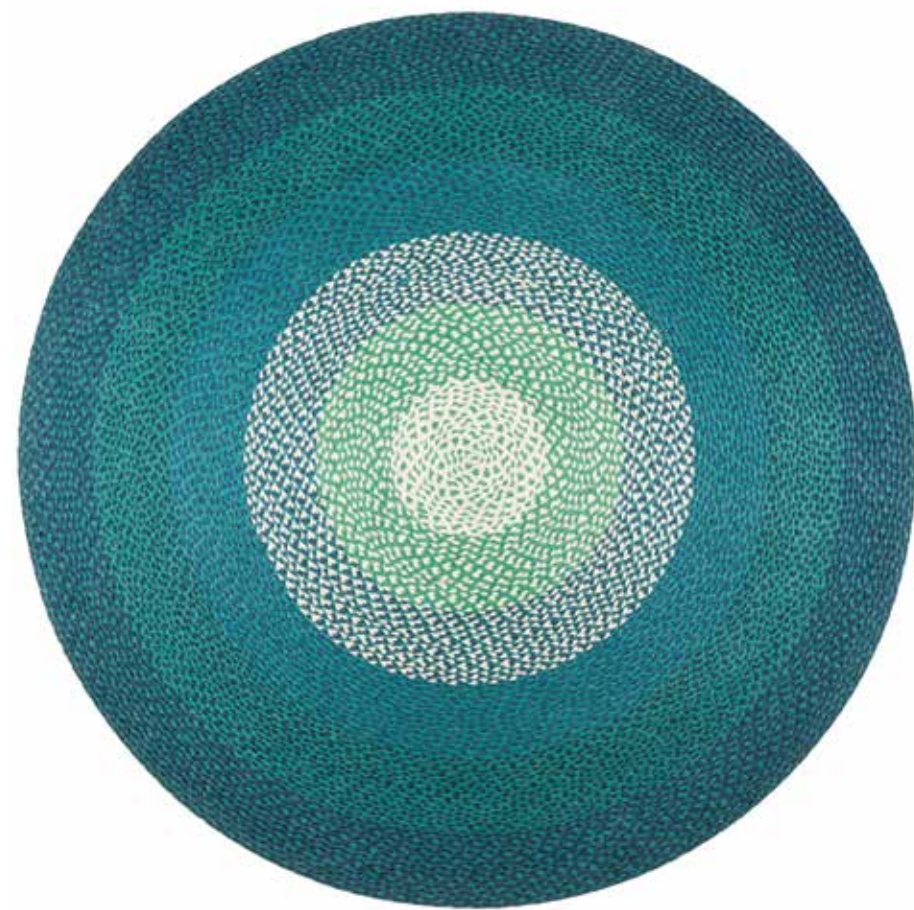
MOG0622

6' round 8' round 85% post-consumer PET 15% cotton braided



MOG0623

6' round 8' round 85% post-consumer PET 15% cotton braided

**MOG0437**

4' round 6' round 8' round 100% jute braided

**MOG0424**

4' round 6' round 8' round 100% jute braided

**MOG0425**

4' round 6' round 8' round 100% jute braided

**MOG0424**



MOG0850

4' round 6' round 8' round 60% jute 30% polyester 10% cotton braided



MOG0851

4' round 6' round 8' round 60% jute 30% polyester 10% cotton braided



MOG0852

4' round 6' round 8' round 60% jute 30% polyester 10% cotton braided



MOG0851



MOG0853

4' round 6' round 8' round 60% jute 30% polyester 10% cotton braided



MOG0855

4' round 6' round 8' round 60% jute 30% polyester 10% cotton braided



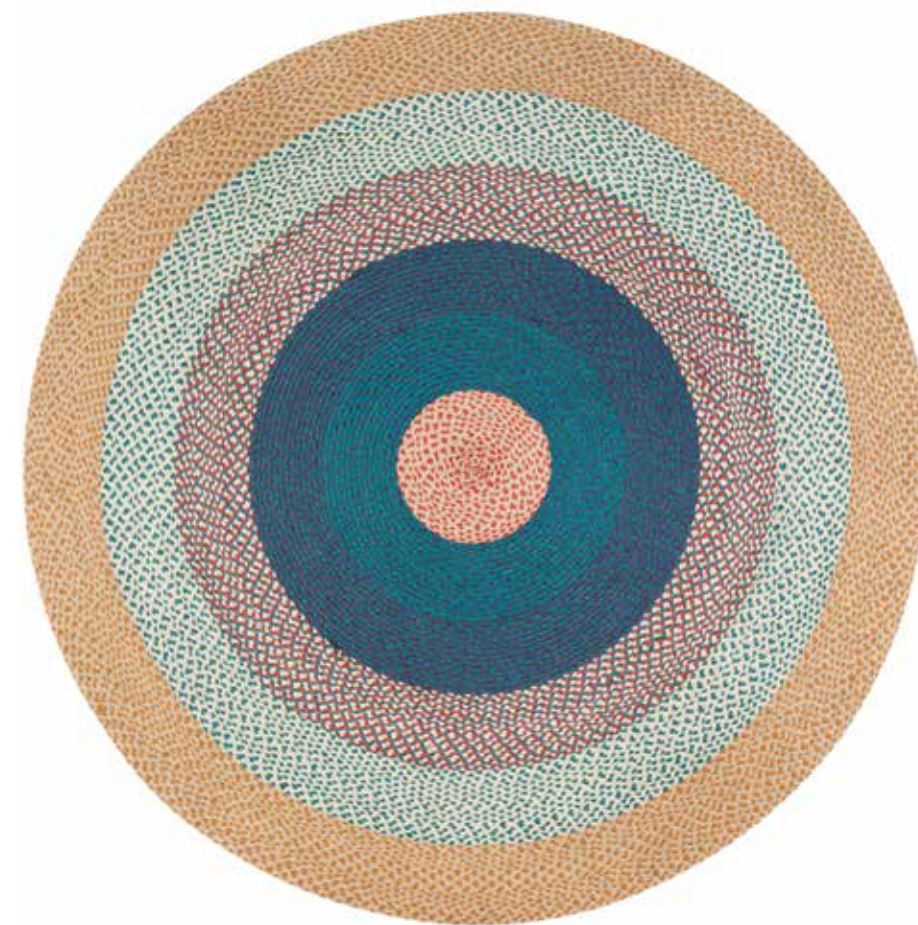
MOG0853

**MOG0856**

4' round 6' round 8' round 100% jute

**MOG0857**

4' round 6' round 8' round 100% jute

**MOG0460**

4' round 6' round 8' round 100% jute

**MOG0461**

4' round 6' round 8' round 100% jute

**MOG0462**

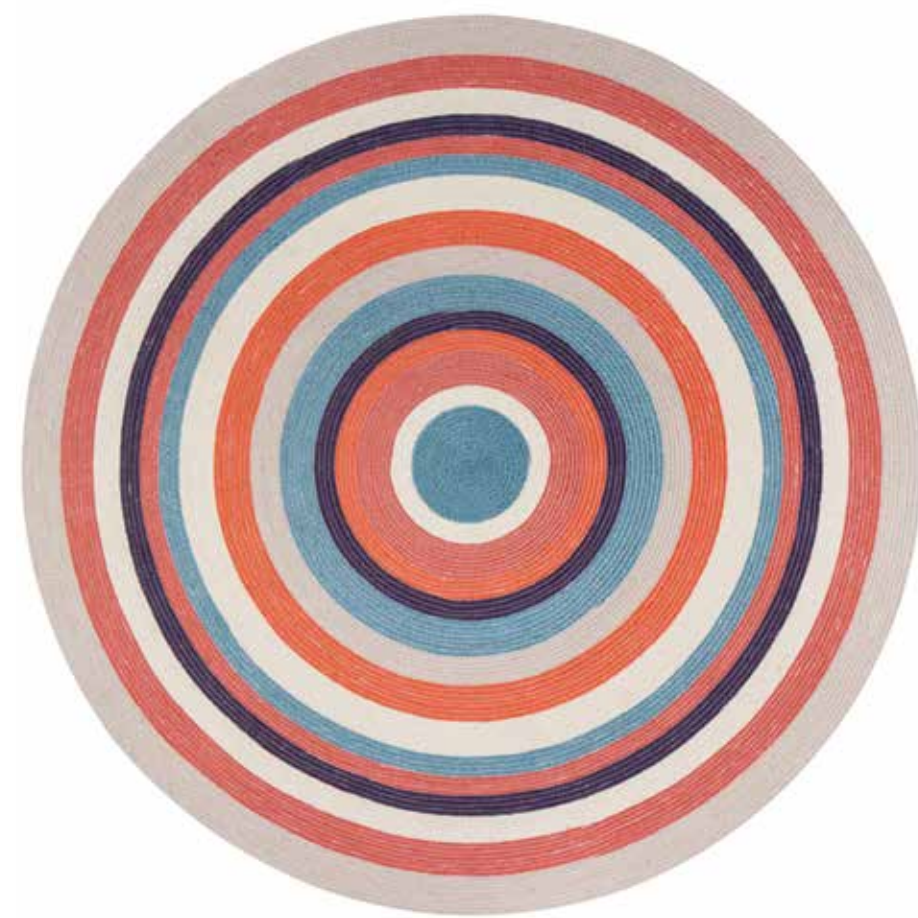
4' round 6' round 8' round 100% jute

**MOG0463**

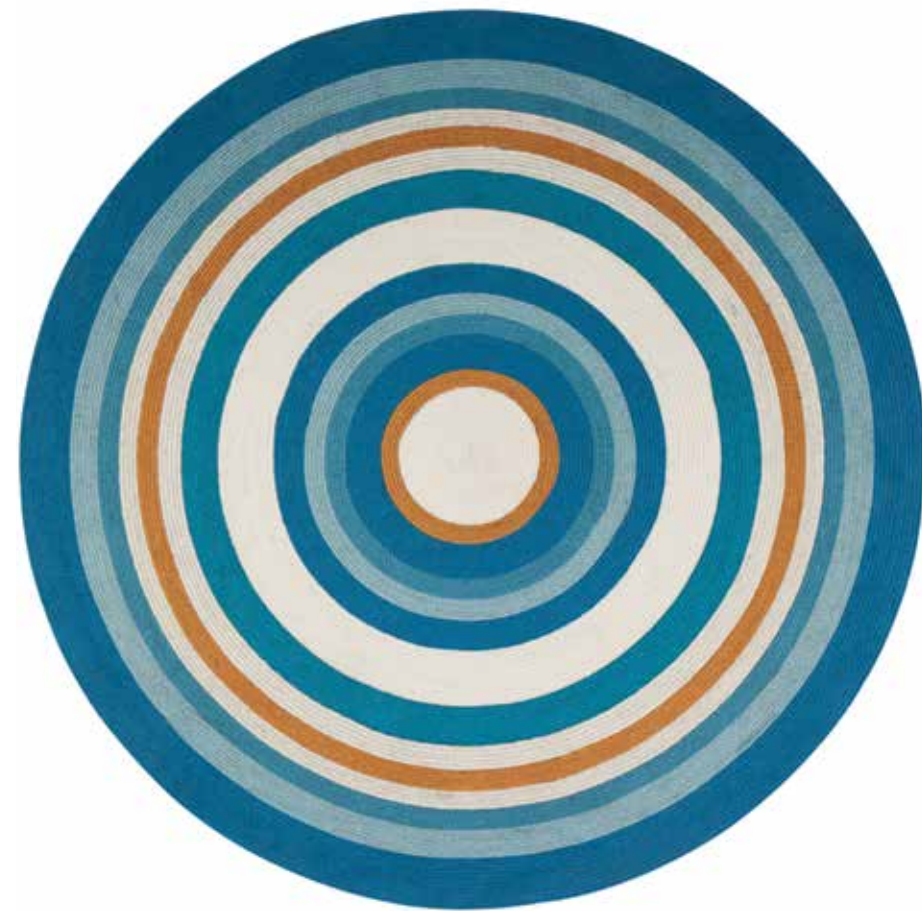
4' round 6' round 8' round 100% jute

**MOG0464**

4' round 6' round 8' round 100% jute

**MOG0465**

4' round 6' round 8' round 100% jute

**MOG0466**

4' round 6' round 8' round 100% jute

**MOG0467**

4' round 6' round 8' round 100% jute

**MOG0468**

4' round 6' round 8' round 100% jute

**MOG0469**

4' round 6' round 8' round 100% jute

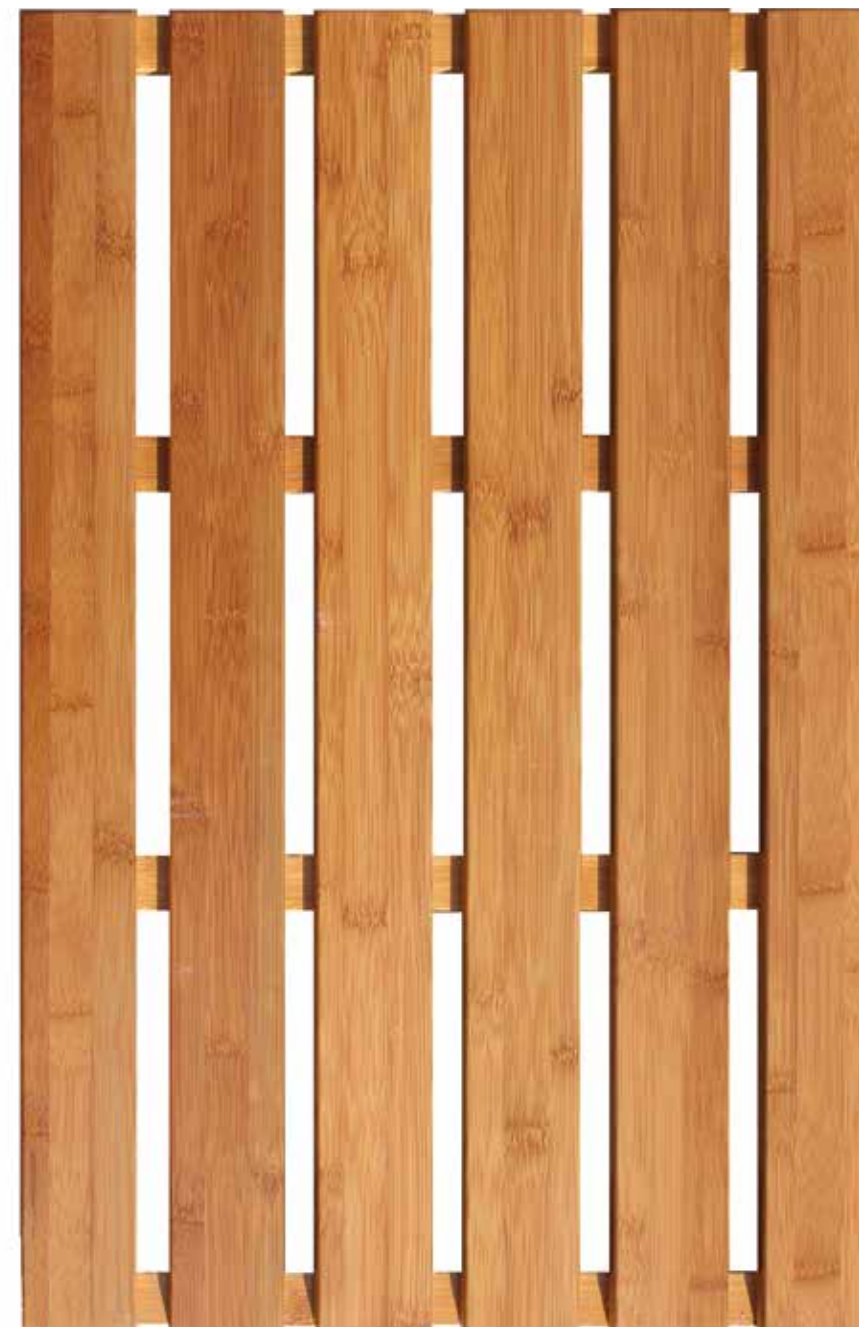
SAUNA MAT

COLLECTION

Specialty mats for those everyday spaces that deserve some special attention. Our Bamboo Bath & Sauna Mat has a water-resistant surface and non-skid soft plastic feet that make this an ideal product for usage in bath, spa, sauna or hot tub areas.

MATERIALS

Bamboo



BATH & SAUNA MAT

100% bamboo



Natural



Walnut



Cherry



White

SIZE OPTIONS



16" x 24"

PRODUCT CHART

Item Number	Size	Color
MOG0190-1624	16" x 24" x 1"	Natural
MOG0191-1624	16" x 24" x 1"	Walnut
MOG0192-1624	16" x 24" x 1"	Cherry
MOG0194-1624	16" x 24" x 1"	White

NEW

BOOT TRAYS COLLECTION

Boot trays don't have to be boring. The foundation of this collection begins with a premium, heavy-duty, waterproof tray made of natural and recycled rubber featuring a classic scroll design. To that we have added an easily removable insert that is available in a variety of stylish patterns and woven from natural, durable coir fiber. This insert adds a pretty punch to your décor and cleans up simply—just remove insert, shake out debris, hose off insert, air dry and you are back in business. Genius! Now go outside, do what you do and know that your footwear has a safe and smart place to rest when you get back home.





HOW TO BUY

1 Select tray size (2 pair, 3 pair, 4 pair)



OR

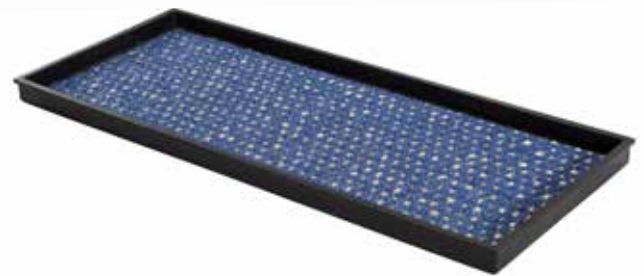
2 Select tray size & insert style



+

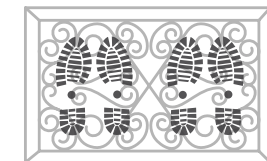


=

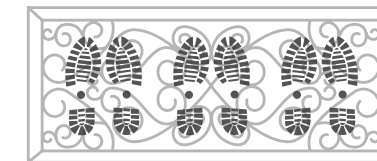


SIZE OPTIONS

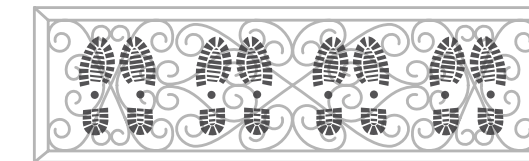
2 pair 24.5" x 14" x 1.5"



3 pair 34.5" x 14" x 1.5"



4 pair 46.5" x 14" x 1.5"



INSERT OPTIONS



001



002



003



004



005



006



007



008



009



010



RECYCLED & NATURAL MATERIALS

- Made from 80% natural rubber—70% of which is recycled from car & truck tires
- 100% woven coir (coconut fiber) insert



VERSATILITY

- A welcome addition to your entryway or mud room
- Keeps your footwear organized and your floors clean
- Perfect solution for your pet food bowls—not just for shoes!



EASY CLEANING

- Shake out debris from insert and tray. Spot clean with mild soap and water or simply hose off with water and allow each section to air dry. Easy!

POUFS

COLLECTION

Versatile. Comfortable. Functional. Stylish. Poufs transform your nice room into something better—like adding chocolate sauce to vanilla ice cream. Maybe even Kahlua. And these poufs are filled in the U.S.A with premium, expanded polypropylene beads that provide an exquisitely dense, soft seating experience and hold their shape much better than your typical fill.



PREMIUM QUALITY FILL

We use EPP (Expanded Polypropylene) beads for our fill instead of the more common EPS (Expanded Polystyrene) because they provide a superior seating experience, help the pouf maintain its shape and are 100% recyclable. Most competitors use EPS beads which create a pouf that feels and sounds like a bean bag, loses its shape easily and are not recyclable.



REDUCED CARBON FOOTPRINT (AND SAVES YOU MONEY)

We import the pouf covers from India and fill them in the U.S.A. Most other pouf suppliers import their poufs pre-filled. Why is this important? Because we can fit *thousands* more covers on a shipping container vs. filled poufs which means we are using less fossil fuel per pouf than our competition and our freight cost is dramatically reduced and those savings mean a better cost to you. Cha-ching!



NEW

**MOGPF001-2014**

22"x22"x17"
55% cotton 45% polyester (cover),
100% expanded polypropylene beads (fill)

NEW

**MOGPF002-2014**

22"x22"x17"
55% cotton 45% polyester (cover),
100% expanded polypropylene beads (fill)

NEW

**MOGPF003-2014**

22"x22"x16"
100% cotton (cover), 100% expanded polypropylene beads (fill)

NEW

**MOGPF004-2014**

22"x22"x16"
100% cotton (cover), 100% expanded polypropylene beads (fill)



MOGPF005-2014

NEW

NEW



MOGPF005-2014

22"x22"x16" 100% cotton (cover), 100% expanded polypropylene beads (fill)



MOGPF006-2014

22"x22"x16" 100% cotton (cover), 100% expanded polypropylene beads (fill)

NEW

**MOGPF007-2014**

22"x22"x16" 100% cotton (cover), 100% expanded polypropylene beads (fill)

NEW

**MOGPF008-1818**

20"x20"x20" 100% polyester (cover), 100% expanded polypropylene beads (fill)

NEW

**MOGPF009-1818**

20"x20"x20" 100% polyester (cover), 100% expanded polypropylene beads (fill)

NEW

**MOGPF010-1818**

20"x20"x20" 100% polyester (cover), 100% expanded polypropylene beads (fill)

NEW

**MOGPF011-1818**

20"x20"x20" 100% polyester (cover), 100% expanded polypropylene beads (fill)

NEW

**MOGPF012-1818**

20"x20"x20" 100% polyester (cover), 100% expanded polypropylene beads (fill)



MOGPF011-1818

NEW

**MOGPF013-1818**

20"x20"x20" 100% polyester (cover), 100% expanded polypropylene beads (fill)

NEW

**MOGPF014-2014**

24"x24"x17" 100% cotton (cover), 100% expanded polypropylene beads (fill)

NEW

**MOGPF015-2014**

24"x24"x17" 100% cotton (cover), 100% expanded polypropylene beads (fill)

NEW

**MOGPF016-2014**

24"x24"x17" 80% jute 10% cotton 10% polyester (cover), 100% expanded polypropylene beads (fill)



MOGPF018-2014

NEW



MOGPF017-2014

24"x24"x17" 80% jute 10% cotton 10% polyester (cover),
100% expanded polypropylene beads (fill)

NEW



MOGPF018-2014

24"x24"x17" 90% cotton 10% polyester (cover),
100% expanded polypropylene beads (fill)

NEW

**MOGPF019-1818**

20"x20"x20" 90% wool 10% cotton (cover),
100% expanded polypropylene beads (fill)

NEW

**MOGPF020-1818**

20"x20"x20" 70% wool 30% cotton (cover),
100% expanded polypropylene beads (fill)

NEW

**MOGPF021-2014**

24"x24"x17" 100% cotton (cover), 100% expanded polypropylene beads (fill)

NEW

**MOGPF022-2014**

24"x24"x17" 100% cotton (cover), 100% expanded polypropylene beads (fill)

NEW

**MOGPF023-2014**

24"x24"x17" 100% polyester (cover), 100% expanded polypropylene beads (fill)

NEW

**MOGPF024-2514**

26"x26"x18" 100% cotton (cover), 100% expanded polypropylene beads (fill)



MOGPF023-2014

NEW

**MOGPF025-2514**

26"x26"x18" 100% cotton (cover), 100% expanded polypropylene beads (fill)

NEW

**MOGPF026-2514**

26"x26"x18" 100% cotton (cover), 100% expanded polypropylene beads (fill)

NEW

**MOGPF027-2514**

26"x26"x18" 100% cotton (cover), 100% expanded polypropylene beads (fill)

NEW

**MOGPF028-2514**

26"x26"x18" 100% cotton (cover), 100% expanded polypropylene beads (fill)



MOGPF029-2514

NEW

NEW

**MOGPF029-2514**

26"x26"x18" 100% cotton (cover), 100% expanded polypropylene beads (fill)

**MOGPF030-2514**

26"x26"x18" 100% cotton (cover), 100% expanded polypropylene beads (fill)

**MOG0010-16RD**

16"x16"x16" 100% jute (cover), 100% polystyrene (fill)

**MOG0002-1818**

18"x18"x18" 100% jute (cover), 100% polystyrene (fill)

**MOG0009-16RD**

16"x16"x16" 100% jute (cover), 100% polystyrene (fill)

**MOG0001-1818**

18"x18"x18" 100% jute (cover), 100% polystyrene (fill)

CARE & CLEANING

VACUUMING

Take good care of your rug by vacuuming it regularly—every week or so is recommended.

That roller brush on the bottom of your vacuum?

That's called a beater bar or beater brush and it's

pretty hard on rugs, especially the natural fiber

and recycled material rugs we sell. Some vacuums

allow you to deactivate or raise up this bar and we

recommend doing so. It will help minimize fraying

and lessen the chance of long tufts getting

pulled (we're looking at you shags). If you are

unable to deactivate the bar raise it up to the

highest level possible.

CLEANING

Life is messy and spills and stains happen. Take a deep breath and then follow these guidelines.

Jute / Cotton / Denim

When a liquid spill occurs absorb as much of it

as possible as quickly as possible by blotting it

with a clean cloth. If there is a stain you can try to

test a mixture of liquid dish soap and water in an

inconspicuous spot to see if discoloration occurs.

If it does not you can try to apply this gently to

the stain in an attempt to remove it. If you get a

solid (e.g. chocolate bar, melted cheese, cat vomit)

on the rug use the dull edge of a knife to scrape

the solid up as much of possible and then follow

instructions above for liquid spills.

Bamboo

Wipe bamboo with a clean, damp cloth. Easy!

Wool / PET / Poly Family / Microfiber

When a liquid spill occurs absorb as much of it

as possible as quickly as possible by blotting it

with a clean cloth. There are many common wool

cleaners available to choose from which can be

bought at rug stores or home improvement stores.

You can also make your own cleaning solution by

combining a teaspoon of liquid soap, a teaspoon

of white vinegar and a quart of warm water. If you

get a solid (e.g. chocolate bar, melted cheese, cat

vomit) on the rug use the dull edge of a knife to

scrape the solid up as much of possible and then

follow instructions above for liquid spills.

Bamboo Viscose / Chenille Shag / Celestial Shag

When a liquid spill occurs absorb as much of it as

possible as quickly as possible by blotting it with

a clean cloth. Viscose will yellow if it gets wet so

soak up liquid spills as quickly as possible. If you

get a solid (e.g. chocolate bar, melted cheese, cat

vomit) on the rug use the dull edge of a knife to

scrape the solid up as much of possible and then

follow instructions above for liquid spills.



Product ID	Collection	Page
MOG0001-1818	Poufs	139
MOG0002-1818	Poufs	138
MOG0009-16RD	Poufs	139
MOG0010-16RD	Poufs	138
MOG0190	Sauna Mat	111
MOG0191	Sauna Mat	111
MOG0192	Sauna Mat	111
MOG0194	Sauna Mat	111
MOG0300	Jute	17, 24
MOG0308	Wool Blends	41
MOG0323	Jute	30
MOG0328	Rounds & Ovals	85, 89
MOG0329	Rounds & Ovals	88
MOG0336	Jute	34, 35
MOG0338	Jute	24
MOG0340	Rounds & Ovals	89
MOG0350	Rounds & Ovals	88
MOG0351	Cornucopia	70
MOG0355	Jute	25
MOG0356	Jute	28
MOG0359	Wool Blends	41
MOG0360	Jute	26
MOG0362	Rounds & Ovals	91
MOG0363	Rounds & Ovals	90
MOG0364	Rounds & Ovals	90
MOG0365	Jute	27
MOG0371	Azure	48
MOG0372	Jute	25
MOG0374	Jute	34
MOG0375	Jute	35
MOG0377	Wool Blends	40
MOG0381	Cornucopia	69

Product ID	Collection	Page
MOG0382	Cornucopia	69
MOG0383	Cornucopia	70
MOG0384	Cornucopia	67
MOG0385	Cornucopia	67
MOG0386	Cornucopia	68
MOG0387	Cornucopia	68
MOG0388	Jute	36
MOG0389	Wool Blends	43
MOG0390	Cornucopia	71
MOG0391	Cornucopia	71
MOG0392	Rounds & Ovals	91
MOG0393	Rounds & Ovals	92
MOG0394	Rounds & Ovals	92
MOG0395	Rounds & Ovals	93
MOG0396	Rounds & Ovals	93, 96
MOG0397	Rounds & Ovals	94
MOG0398	Rounds & Ovals	94
MOG0399	Cornucopia	72
MOG0400	Jute	36, 37
MOG0401	Cornucopia	73
MOG0403	Jute	37
MOG0404	Wool Blends	43
MOG0405	Cornucopia	74
MOG0407	Cornucopia	74
MOG0408	Cornucopia	75
MOG0410	Cornucopia	75
MOG0411	Cornucopia	62
MOG0414	Jute	31
MOG0416	Cornucopia	63
MOG0418	Cornucopia	63
MOG0420	Cornucopia	72, 73
MOG0422	Cornucopia	77

Product ID	Collection	Page
MOG0423	Cornucopia	77
MOG0424	Rounds & Ovals	98, 99
MOG0425	Rounds & Ovals	99
MOG0426	Wool Blends	40
MOG0427	Wool Blends	39, 44
MOG0428	Cornucopia	78
MOG0429	Cornucopia	78
MOG0430	Wool Blends	44, 45
MOG0431	Cornucopia	79
MOG0432	Wool Blends	42, 45
MOG0434	Jute	26, 27
MOG0435	Jute	30
MOG0436	Jute	28, 29
MOG0437	Rounds & Ovals	98
MOG0438	Cornucopia	60, 61
MOG0439	Cornucopia	61
MOG0440	Cornucopia	58
MOG0446	Cornucopia	80
MOG0447	Jute	18
MOG0451	Celestial Shag	81
MOG0460	Rounds & Ovals	105
MOG0461	Rounds & Ovals	105
MOG0462	Rounds & Ovals	106
MOG0463	Rounds & Ovals	106
MOG0464	Rounds & Ovals	107
MOG0465	Rounds & Ovals	107
MOG0466	Rounds & Ovals	108
MOG0467	Rounds & Ovals	108
MOG0468	Rounds & Ovals	109
MOG0469	Rounds & Ovals	109
MOG0470	Jute	18, 19
MOG0471	Jute	20

Product ID	Collection	Page
MOG0472	Jute	20
MOG0473	Cornucopia	56
MOG0474	Jute	21
MOG0475	Jute	21
MOG0476	Jute	56
MOG0477	Jute	23
MOG0478	Jute	22, 23
MOG0479	Rounds & Ovals	86
MOG0480	Rounds & Ovals	86, 87
MOG0481	Cornucopia	57
MOG0482	Cornucopia	57
MOG0483	Cornucopia	58
MOG0614	Cornucopia	79
MOG0614	Rounds & Ovals	95
MOG0622	Rounds & Ovals	97
MOG0623	Rounds & Ovals	97
MOG0651	Rounds & Ovals	95
MOG0756	Cornucopia	64, 65
MOG0757	Cornucopia	64
MOG0850	Cornucopia	65
MOG0850	Rounds & Ovals	100
MOG0851	Cornucopia	66
MOG0851	Rounds & Ovals	100, 101
MOG0852	Cornucopia	66
MOG0852	Rounds & Ovals	101
MOG0853	Cornucopia	76
MOG0853	Rounds & Ovals	102, 103
MOG0855	Cornucopia	76
MOG0855	Rounds & Ovals	102
MOG0856	Cornucopia	82
MOG0856	Rounds & Ovals	104
MOG0857	Cornucopia	83

Product ID	Collection	Page
MOG0857	Rounds & Ovals	104
MOG1013	Cornucopia	83
MOG1030	Jute	32, 33
MOG1031	Jute	33
MOG1032	Azure	48
MOG1033	Azure	50, 53
MOG1102	Cornucopia	80, 81
MOG1103	Cornucopia	82
MOG1115	Azure	50
MOG1116	Azure	49
MOG1117	Azure	51
MOG1119	Azure	47, 52
MOG1120	Azure	52
MOG1121	Azure	53
MOG1124	Azure	51
MOGPF001-2014	Poufs	118
MOGPF002-2014	Poufs	118
MOGPF003-2014	Poufs	117, 119
MOGPF004-2014	Poufs	119
MOGPF005-2014	Poufs	120, 121
MOGPF006-2014	Poufs	121
MOGPF007-2014	Poufs	122
MOGPF008-1818	Poufs	122
MOGPF009-1818	Poufs	123
MOGPF010-1818	Poufs	123
MOGPF011-1818	Poufs	124, 125
MOGPF012-1818	Poufs	124
MOGPF013-1818	Poufs	126
MOGPF014-2014	Poufs	126
MOGPF015-2014	Poufs	127
MOGPF016-2014	Poufs	127
MOGPF017-2014	Poufs	129

Product ID	Collection	Page
MOGPF018-2014	Poufs	128, 129
MOGPF019-1818	Poufs	130
MOGPF020-1818	Poufs	130
MOGPF021-2014	Poufs	131
MOGPF022-2014	Poufs	131
MOGPF023-2014	Poufs	132, 133
MOGPF024-2514	Poufs	132
MOGPF025-2514	Poufs	134
MOGPF026-2514	Poufs	134
MOGPF027-2514	Poufs	135
MOGPF028-2514	Poufs	135
MOGPF029-2514	Poufs	136, 137
MOGPF030-2514	Poufs	137





